

Wine growing property with renovated houses 5 minutes from motorways and TGV station. Panoramic view



## INFORMATION

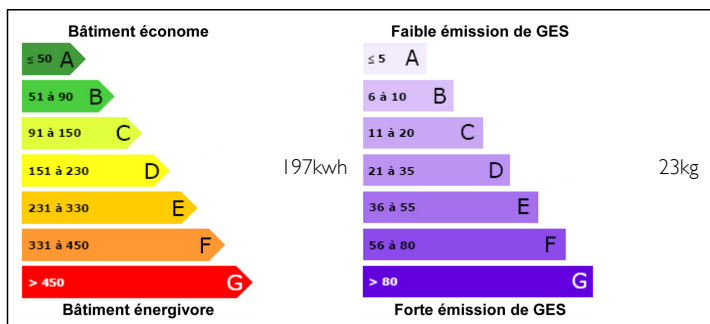
Town:	Chaintré
Department:	Saône-et-Loire
Bed:	10
Bath:	9
Floor:	442 m2
Plot Size:	20000 m2

## IN BRIEF

Only 5 minutes from the motorways and the TGV station, this magnificent winegrowing property with its fully renovated buildings will seduce you with its panoramic view, its 10 bedrooms, its 8 parking spaces and its 440m2 of living space. The vineyards, in a 50/50 lease, adjoin the property and are in white Mâcon Vinzelles and Puilly Fuissé. A unique property to receive guests with an established income.

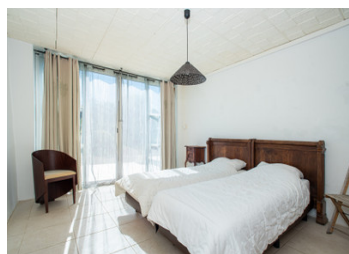


## ENERGY - DPE



NB. Quoted prices relate to euro transactions. Fluctuations in exchange rates are not the responsibility of the agency or those representing it. The agency and its representatives are not authorised to make or give guarantees relating to the property. These particulars do not form part of any contract but are to be taken as a general representation of the property. Any areas, measurements or distances are approximate. Text, photographs and plans, where applicable, are for guidance only. Leggett and its representatives have not tested services, equipment or facilities and cannot guarantee the same.

Particulars for off-plan purchases are intended as a guide only. Final finishes to the property may vary. Purchasers are advised to engage a solicitor to check the plans and specifications as laid out in their purchase contract with the developer.



## DESCRIPTION

Recently renovated, the property consists of two adjoining houses and a third, smaller one that can be used as a caretaker's cottage.

The original house is in traditional Mâconnais style. It is entered on the courtyard side through its Mâconnais gallery. The central corridor opens onto a large room comprising a living room with exposed beams, a dining room with a double height ceiling and a large fitted kitchen. On this level there are two elegant double bedrooms with a shower room with WC.

From the dining room there is a mezzanine with a sitting area, two double bedrooms and a smaller bedroom. A bathroom and separate WC complete the first floor.

The second house, which is the result of renovations to the outbuildings, is more contemporary in style. With access also from the courtyard, you arrive in a 50m<sup>2</sup> living room with a fitted kitchen and dining area. This living room opens onto a south facing terrace. A corridor leads you to 3 bedrooms with private shower rooms and toilets. Each bedroom has access to the terrace.

From the living room a staircase leads you to the three bedrooms on the first floor with private shower rooms and toilets. On this level, you have access to the first house by entering the dining room.

Adjacent to this second house is a 50m<sup>2</sup> ground floor flat with a living room and kitchenette, a bedroom, a shower and a separate toilet. A covered terrace completes the apartment.

To the rear of...

## NOTES