

Chalet built on 3 floors, 9 bedrooms, 2 garages, living room, dining room, kitchen, storage rooms



INFORMATION

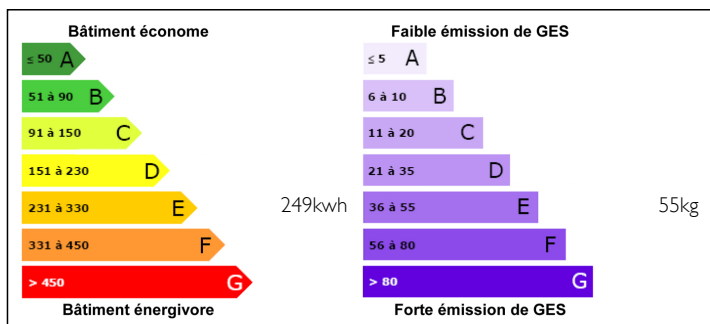
Town:	Séez
Department:	Savoie
Bed:	9
Bath:	7
Floor:	318 m2
Plot Size:	150 m2



IN BRIEF

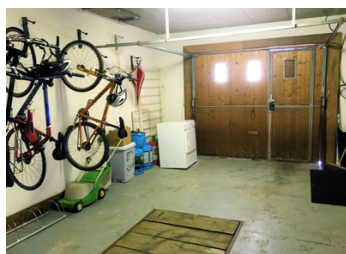
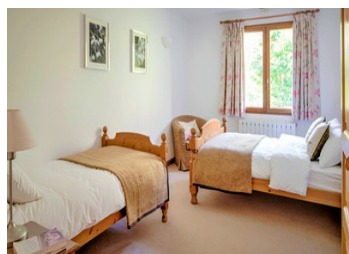
Unique, large 9 bedroom chalet in a sought after location, ski in from the impressive resort of La Rosiere. It comprises 3 levels in the traditional Savoyard chalet style and has level car parking to the front, 2 integral garages and a large terrace to the rear. Hallway with boot room, TV room, spacious living room with log burner, opening into the dining room and fully fitted kitchen. Large walk in food storage and ground floor WC. A stairway leads to the first floor where you will find 6 very generously sized bedrooms. 5 of them en-suite, 1 with a separate bathroom. There is a large balcony to the front and side with breathtaking views to the mountains. On the second floor there is a 3 bedroom apartment with open plan kitchen, dining living area, a modern family bathroom and a front facing balcony looking down the valley.

ENERGY - DPE



NB. Quoted prices relate to euro transactions. Fluctuations in exchange rates are not the responsibility of the agency or those representing it. The agency and its representatives are not authorised to make or give guarantees relating to the property. These particulars do not form part of any contract but are to be taken as a general representation of the property. Any areas, measurements or distances are approximate. Text, photographs and plans, where applicable, are for guidance only. Leggett and its representatives have not tested services, equipment or facilities and cannot guarantee the same.

Particulars for off-plan purchases are intended as a guide only. Final finishes to the property may vary. Purchasers are advised to engage a solicitor to check the plans and specifications as laid out in their purchase contract with the developer.



LOCAL TAXES

Taxe foncière: 2368 EUR

NOTES

DESCRIPTION

This is a unique opportunity to acquire a stand alone property of incredible value. With 320 square metres of habitable space, this chalet offers a tremendous amount of volume.

The chalet has been used for catered holiday rentals and is well laid out with outstanding accommodation for guests, private accommodation for the owner and the necessary space for storage. It could also make a beautiful private home.

The local resorts of Les Arc, La Rosiere, Sainte Foy, Val d'Isère and Tignes are just a short drive away. It is even possible to ski to the rear terrace from La Rosière.

There is a free bus service to take you to la Rosière ski station, as well as the centre of Seez and the nearest bustling market town of Bourg Saint Maurice. There is a fantastic local bar and restaurant within walking distance and a nearby school.

You enter the chalet via a hallway. To your right is a boot room with access to the huge integral garage with an inspection pit. To the left there is a separate TV room / office space and a very spacious living area with a traditional log burning fireplace which is the focal point of the chalet. This flows through to the large open plan well equipped kitchen and dining room, which can comfortably seat 16 people for that ultimate entertaining experience. Adjacent to this is a large cold store with ample room for wine and provisions. There...