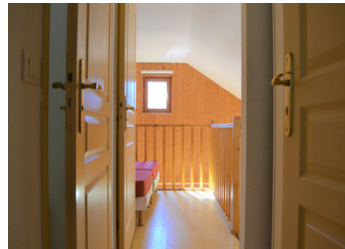
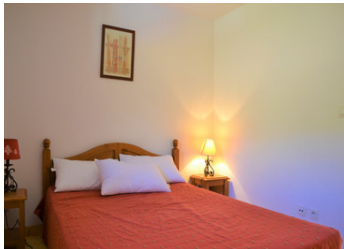


Large ski apartment, 8 beds, mezzanine, 2 bedrooms, stunning views... 4 mins walk to slopes.



INFORMATION

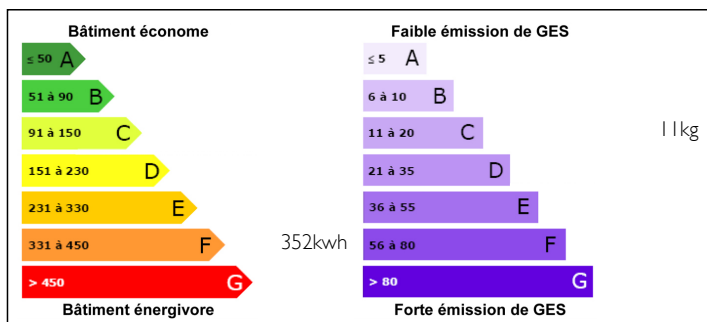
Town:	Saint-Sorlin-d'Arves
Department:	Savoie
Bed:	2
Bath:	2
Floor:	54 m2
Outside Space:	5 m2



IN BRIEF

Large, equipped 8 bed apartment for sale in the Sybelles ski area. Equipped kitchenette with large open living space on two levels. Bedroom, kitchen diner and separate toilette and shower room on lower floor. Bedroom, second bathroom and mezzanine bedroom on upper floor. Short 4 minute walk to the pistes, local ski shops, restaurants and shops in the upper part of resort. Free parking in close proximity. Regular free Navette into the center of this bustling ski village.

ENERGY - DPE



NB. Quoted prices relate to euro transactions. Fluctuations in exchange rates are not the responsibility of the agency or those representing it. The agency and its representatives are not authorised to make or give guarantees relating to the property. These particulars do not form part of any contract but are to be taken as a general representation of the property. Any areas, measurements or distances are approximate. Text, photographs and plans, where applicable, are for guidance only. Leggett and its representatives have not tested services, equipment or facilities and cannot guarantee the same.

Particulars for off-plan purchases are intended as a guide only. Final finishes to the property may vary. Purchasers are advised to engage a solicitor to check the plans and specifications as laid out in their purchase contract with the developer.



LOCAL TAXES

Taxe foncière: 470 EUR

NOTES

DESCRIPTION

This a rare opportunity to own a large classic ski apartment in a great and up and coming ski area that ticks all the boxes.

Situated in the 'La Porte des Saisons' residence and just a stones throw away from the slopes, it provides a really comfortable and practical location within the very popular and up and coming resort of Saint Sorlin D'arves.

Situated across the first and second floor of this apartment chalet, the front door is accessed direct from the parking outside up a short flight of exterior stairs. The apartment is accessed direct from the outside and therefore shuts itself away from the noise of public area corridors. The chalet itself is set back from the main center of town but which is perfectly accessible via the free ski bus. In close proximity you have everything to hand... small supermarket, restaurants, ski shops and of course the ski area.

The apartment itself has two bedrooms, one with double bed on the upper floor and one with twin single beds on the lower floor. The living area has a pull out sofa along with the dining table and equipped kitchenette. From the main living area large glazed doors lead you on to the balcony which has really impressive views across resort and the mountains of the Maurienne valley..

Equipped for 8 people, a further two beds are located on the mezzanine above the kitchen/diner. The apartment boasts a separate toilette and shower room down...