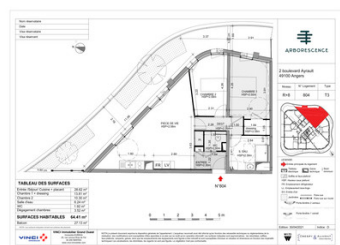


Arborescence in ANGERS



INFORMATION

Town:	Angers
Department:	Maine-et-Loire
Bed:	2
Bath:	1
Floor:	64 m2
Outside Space:	27 m2

IN BRIEF

ARBORESCENCE -T3- Delivery 4T 2023

ENERGY - DPE



NB. Quoted prices relate to euro transactions. Fluctuations in exchange rates are not the responsibility of the agency or those representing it. The agency and its representatives are not authorised to make or give guarantees relating to the property. These particulars do not form part of any contract but are to be taken as a general representation of the property. Any areas, measurements or distances are approximate. Text, photographs and plans, where applicable, are for guidance only. Leggett and its representatives have not tested services, equipment or facilities and cannot guarantee the same.

Particulars for off-plan purchases are intended as a guide only. Final finishes to the property may vary. Purchasers are advised to engage a solicitor to check the plans and specifications as laid out in their purchase contract with the developer.

DESCRIPTION

In the heart of Angers, along river Maine, ARBORESCENCE is an intergenerational program putting together Senior Service Residences, Co-working offices, Child care and Roof-top area. Using audacious modern architecture, with a shared garden, incredible views of river Maine and the historic center of Angers. A perfect symbiosis of dynamism and serenity.

With a top-quality choice of apartments including high end presentations from T1 to T5 between the 6th and 11th floor, your new property awaits!

Information about risks to which this property is exposed is available on the Géorisques website : <https://www.georisques.gouv.fr>

NOTES