

Cannes Penthouse of 162 m2 on the Pointe Croisette 4 Bedrooms 360° Sea View



INFORMATION

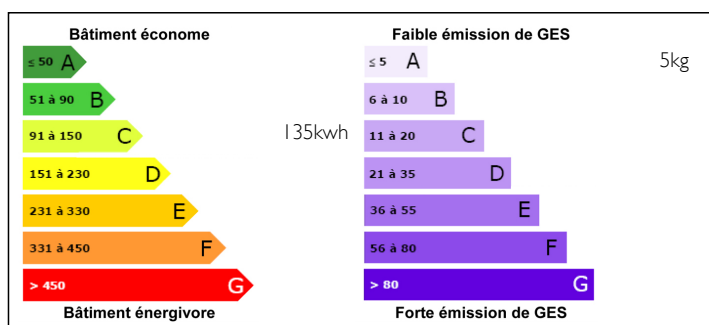
| | |
|-------------|-----------------|
| Town: | Cannes |
| Department: | Alpes-Maritimes |
| Bed: | 4 |
| Bath: | 0 |
| Floor: | 163 m2 |
| Plot Size: | 0 m2 |



IN BRIEF

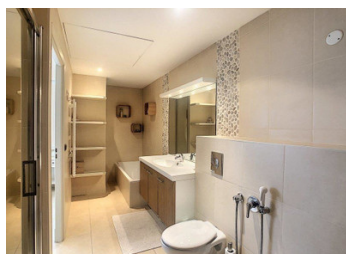
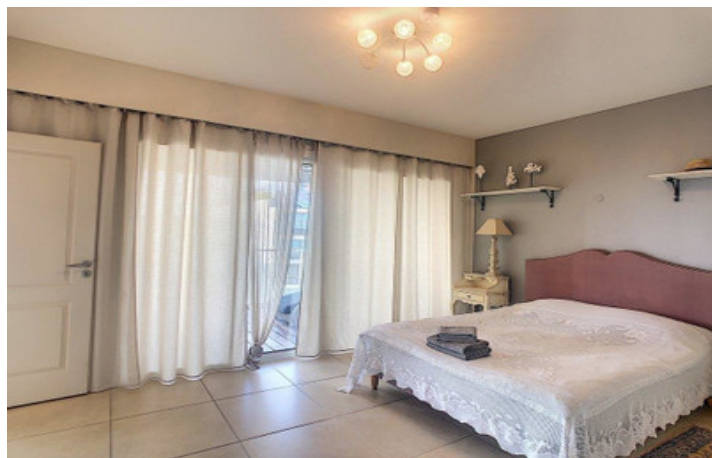
Unique in Cannes, luxurious Penthouse villa 6 rooms: 162m² with 60m² of single storey terrace and 152m² upstairs with 360° sea and mountain view. Located in a recent residence opposite the Palm Beach Casino, a stone's throw from the sea and the beaches of the Croisette. This two-level apartment is connected by a private staircase: On the 1st level: An entrance hall, a living room opening onto a 60m² terrace, an equipped kitchen, four bedrooms with walk-in closets and bathrooms with WC, passageways. On the 2nd level: Roof terrace with an area of 152m² with planter, partly fitted out as a spa area with a bedroom, a jacuzzi and a private hammam, the whole has a summer kitchen with BBQ. A double garage on the ground floor and two parking spaces including one covered.

ENERGY - DPE



NB. Quoted prices relate to euro transactions. Fluctuations in exchange rates are not the responsibility of the agency or those representing it. The agency and its representatives are not authorised to make or give guarantees relating to the property. These particulars do not form part of any contract but are to be taken as a general representation of the property. Any areas, measurements or distances are approximate. Text, photographs and plans, where applicable, are for guidance only. Leggett and its representatives have not tested services, equipment or facilities and cannot guarantee the same.

Particulars for off-plan purchases are intended as a guide only. Final finishes to the property may vary. Purchasers are advised to engage a solicitor to check the plans and specifications as laid out in their purchase contract with the developer.



DESCRIPTION

Exclusivity

Unique in Cannes, luxurious villa on the roof with 6 rooms: 162 m² with 60 m² of single storey terrace and 152m² upstairs with 360 ° sea view and the mountains. Located in a recent residence opposite the Palm Beach Casino, a stone's throw from the sea and the beaches of the Croisette.

This two-level apartment is connected by a private staircase:

- At the 1st level: an entrance hall, a living room opening onto a 60 m² terrace, an equipped kitchen, four bedrooms with walk-in closets and bathrooms with WC, passageways.

- At the 2nd level: roof terrace with an area of 152 m² with planter, partly fitted out as a spa area with a bedroom, a jacuzzi and a private hammam, the whole has a summer kitchen with BBQ.

Double box on the ground floor, two parking spaces including one covered.

Information about risks to which this property is exposed is available on the Géorisques website : <https://www.georisques.gouv.fr>

LOCAL TAXES

Taxe foncière: 3475 EUR

NOTES