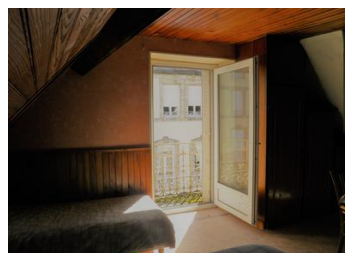
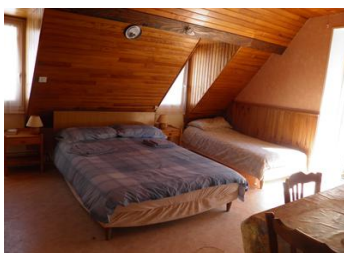


Located at La Bourboule. Two separate studio flats on the top floor with views. Close to ski resorts.



INFORMATION

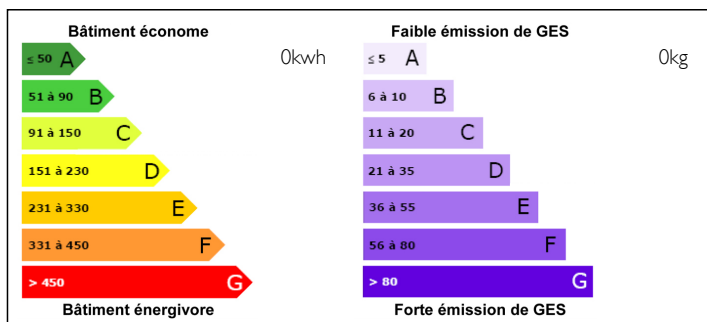
Town:	LA BOURBOULE
Department:	Puy de Dome
Bed:	2
Bath:	2
Floor:	34 m2
Plot Size:	0 m2



IN BRIEF

Two separate studio flats located at the top of a house. In need of updating, could make one nice apartment. Walking distance to the spa town of La Bourboule which has all the amenities you could need. Surrounded by many beautiful towns and villages, lakes and mountains, so plenty on offer. Close to the ski resorts. The international airport at Clermont Ferrand.

ENERGY - DPE



NB. Quoted prices relate to euro transactions. Fluctuations in exchange rates are not the responsibility of the agency or those representing it. The agency and its representatives are not authorised to make or give guarantees relating to the property. These particulars do not form part of any contract but are to be taken as a general representation of the property. Any areas, measurements or distances are approximate. Text, photographs and plans, where applicable, are for guidance only. Leggett and its representatives have not tested services, equipment or facilities and cannot guarantee the same.

Particulars for off-plan purchases are intended as a guide only. Final finishes to the property may vary. Purchasers are advised to engage a solicitor to check the plans and specifications as laid out in their purchase contract with the developer.



DESCRIPTION

Located within walking distance to La Bourboule these studio flats currently comprise of :

Stairs lead to the top floor where you will find.

Studio 1 - living room (20m²) with corner kitchen and balcony, bathroom.

Studio 2 – living room (14m²), kitchenette and bathroom.

The studios could do with refreshing or you could renovate both into one large apartment.

LOCAL TAXES

Taxe foncière: 519 EUR

Taxe habitation: 754 EUR

NOTES