

Excellent country house. Ideal large family home or tourist business opportunity. WhatsApp videos available

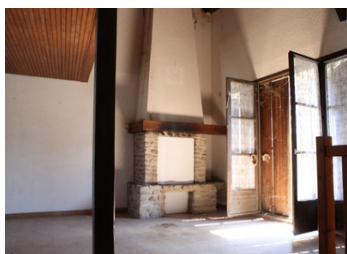


## INFORMATION

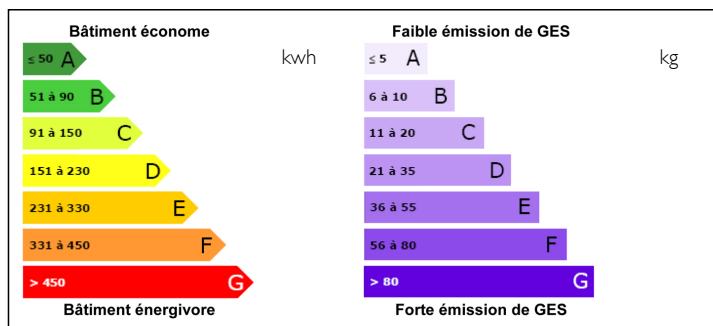
Town:	Pionnat
Department:	Creuse
Bed:	6
Bath:	3
Floor:	300 m2
Plot Size:	5122 m2

## IN BRIEF

House including downstairs: boiler room, 2 large bedrooms, lounge, 7 small bedrooms, wc Upstairs: 6 bedrooms, 2 bedrooms cabin, bathroom, shower room, dressing room, games room, dining room, wc . Ground. Garage, barn and two additional plots.



## ENERGY - DPE



NB. Quoted prices relate to euro transactions. Fluctuations in exchange rates are not the responsibility of the agency or those representing it. The agency and its representatives are not authorised to make or give guarantees relating to the property. These particulars do not form part of any contract but are to be taken as a general representation of the property. Any areas, measurements or distances are approximate. Text, photographs and plans, where applicable, are for guidance only. Leggett and its representatives have not tested services, equipment or facilities and cannot guarantee the same.

Particulars for off-plan purchases are intended as a guide only. Final finishes to the property may vary. Purchasers are advised to engage a solicitor to check the plans and specifications as laid out in their purchase contract with the developer.



## DESCRIPTION

Crossing workshop with front door is

then open garage

open entrance and staircase housing floor, laundry, reserves, kitchen, wc, washbasin

Large living room crossing with fireplace

entrance with stairs

two rooms in southern gable

1 internship

bright living room with kitchen

then mezzanine with stairs, 2 bedrooms, bathroom, wc

so in the division of the building

The so-called south apartment occupies the entire ground floor and the south side of the first floor  
The apartment called north occupies an entrance on the ground floor a first floor and a mezzanine above.

A boiler on the ground floor distributes heating by radiators with hot water connections. Mixed ball for domestic hot water.

Outbuildings: First building: On the ground floor, a garage serviced by a gate. 1st floor served by a wooden staircase.

Second building: building of bread oven. It includes various spare parts on the ground floor as well as in the floor.

A shed can serve as a garage

Two more areas containing gardens and additional land

## NOTES