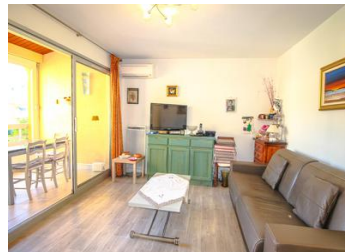


1 bedroom Apartment sleeps up to 6 with lovely views of the huge swimming pool and hillsides.



INFORMATION

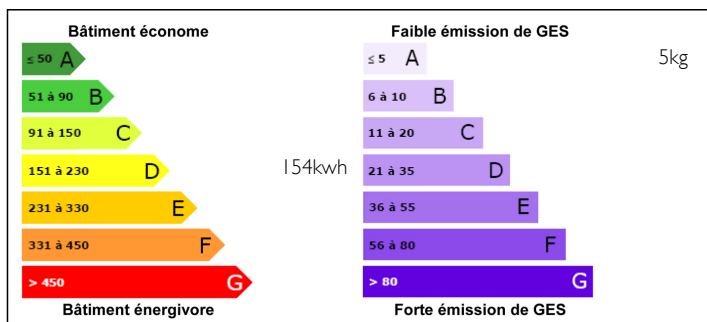
Town:	LE LAVANDOU
Department:	Var
Bed:	1
Bath:	1
Floor:	31 m2
Plot Size:	38 m2



IN BRIEF

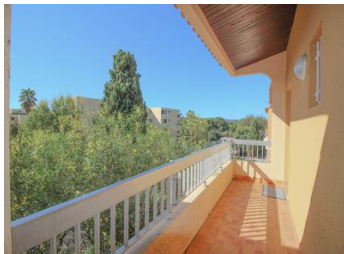
Located perfectly for close access to the shops and the beach. This lovely apartment has an amazing swimming pool in the secure pretty gardens. There is also a great lounge area and showers. service charge €960 per year Please see floorplan link below

ENERGY - DPE



NB. Quoted prices relate to euro transactions. Fluctuations in exchange rates are not the responsibility of the agency or those representing it. The agency and its representatives are not authorised to make or give guarantees relating to the property. These particulars do not form part of any contract but are to be taken as a general representation of the property. Any areas, measurements or distances are approximate. Text, photographs and plans, where applicable, are for guidance only. Leggett and its representatives have not tested services, equipment or facilities and cannot guarantee the same.

Particulars for off-plan purchases are intended as a guide only. Final finishes to the property may vary. Purchasers are advised to engage a solicitor to check the plans and specifications as laid out in their purchase contract with the developer.



DESCRIPTION

Situated on the 2nd floor of a development consisting of 3 low rise buildings. The bedroom and living area both face the beautiful gardens and have wonderful views of the pool and the 'Massif des Maures' hillsides. The good size terrace has an electric clear screen to create an additional sealed off dining area. As you enter the apartment, on the right hand side is a fitted cupboard and an enclosed alcove housing bunk beds/storage. It has a window facing the front of the property. The bathroom with WC has plenty of light and is situated on the left off the front hallway. The building and gardens are very well maintained and there is a possibility to rent a parking space/garage. The property is only a 4 min drive/12 walk to the beach and all the sea front cafes, bars and restaurants. Le Lavandou is a lovely vibrant town with a port and many boutiques, petanque courts, water sports and events during the summer months.

LOCAL TAXES

Taxe foncière: 621 EUR

NOTES