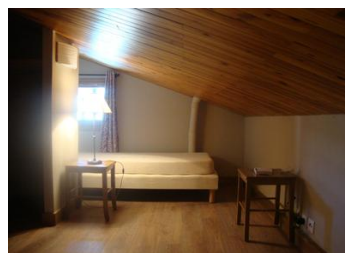


Two bedroom ski apartment for sale in Montchavin, La Plagne, Paradiski. Residence with reception, bar , fitness room and sauna. 2 balconies and ski locker. La...



INFORMATION

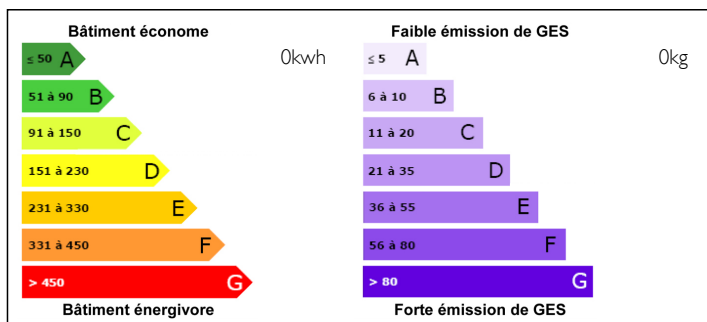
Town:	LA PLAGNE
Department:	Savoie
Bed:	2
Bath:	1
Floor:	48 m2
Plot Size:	0 m2



IN BRIEF

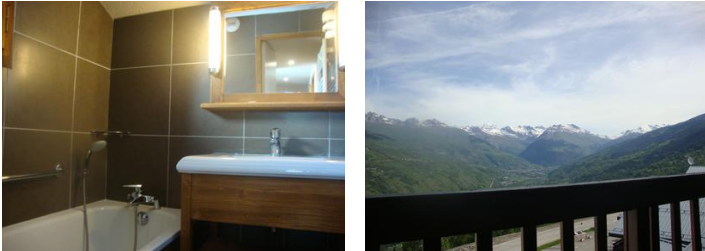
This is an excellent price for a two bedroom ski apartment for sale in the charming village of Montchavin, La Plagne (1250m) connected to all of high altitude La Plagne and, via the Vanoise Express cable car, all of Les Arcs as well. It is situated on the top floor of the Chalet de Montchavin residence just 100m from the Les Coches bubble and the village centre. Located under the eaves the apartment offers a total off 48,30 sq.m of accommodation with 27, 30 m2 above 1m-80 and 21,00 m2 below 1m-80—mainly in the bedrooms which have sloping ceilings. There are two balconies and a ski locker. The balcony to the front of the residence offers great views over the valley to the mountains beyond including Mont Blanc. The residence offers reception, bar, fitness room and sauna facilities all free of charge to owners. Please note; the apartment is currently under a leaseback scheme...

ENERGY - DPE



NB. Quoted prices relate to euro transactions. Fluctuations in exchange rates are not the responsibility of the agency or those representing it. The agency and its representatives are not authorised to make or give guarantees relating to the property. These particulars do not form part of any contract but are to be taken as a general representation of the property. Any areas, measurements or distances are approximate. Text, photographs and plans, where applicable, are for guidance only. Leggett and its representatives have not tested services, equipment or facilities and cannot guarantee the same.

Particulars for off-plan purchases are intended as a guide only. Final finishes to the property may vary. Purchasers are advised to engage a solicitor to check the plans and specifications as laid out in their purchase contract with the developer.



DESCRIPTION

The accommodation comprises.

An entrance hallway. Off this there is the front balcony with great views over the valley.

To the right a fitted galley kitchen.

Bedroom 1; a twin/double room under the eaves with plenty of hanging space.

Separate WC

Bathroom with bath, shower attachment, washbasin and heated towel rail—nicely fitted out and tiled.

A good sized lounge/dining area with balcony to the rear of the residence offering views of the forest.

Bedroom 2; again under the eaves and with two single beds.

Heating is by electric heaters.

There is external parking to the front of the residence.

Montchavin, La Plagne (1250m) is a former farming village turned ski village with direct lift access to all of La Plagne, Les Arcs ,Paradiski—one of the world's great ski areas.

It is home to the excellent Evolution 2 ski school and has a good choice of shops and restaurants and a couple of bars. There is a lovely indoor/outdoor swimming pool complex in the village whilst a free shuttle bus links Montchavin to ,sister village, Les Coches.

With an amazing 425km of slopes all accessed by ski lifts, La Plagne, Les Arcs, Paradiski is one of the world's great ski areas.

Montchavin enjoys a lively summer season in July and August whilst access to the valley and Bourg St Maurice for all year round life is only 10 minutes in the car.

Travel Info.

BY car it is an approx 10 hour drive from the main channel ports.

By air, Chambery, Geneva, Lyon and Grenoble are the main airports serving the...

NOTES