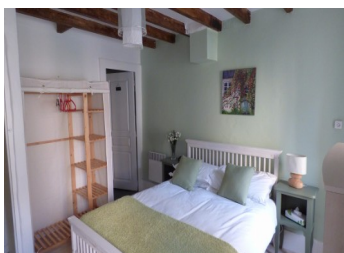


Pretty village cottage with ground floor bedroom - Great potential for lock up and leave holiday home



INFORMATION

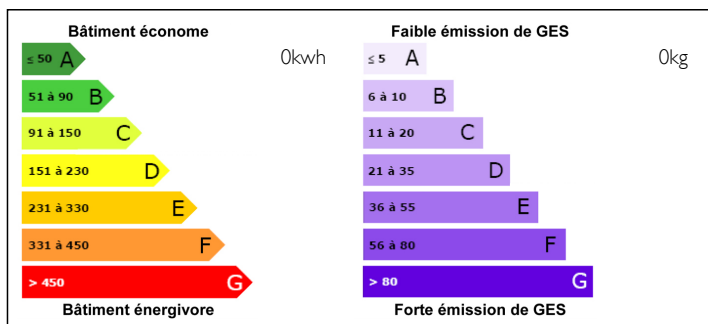
| | |
|-------------|--------------------|
| Town: | CHEVAIGNE DU MAINE |
| Department: | Mayenne |
| Bed: | 3 |
| Bath: | 2 |
| Floor: | 82 m2 |
| Plot Size: | 280 m2 |



IN BRIEF

In a quiet village in the lovely Mayenne countryside just 10 minutes from medieval Lassay les Chateaux with its castles and lake and also Javron les Chapelles, this renovated cottage is ready to move in to with no work to do. The spa town of Bagnoles de l'Orme is under 20 minutes by car. Cross Channel ferries 1,5 hours, Caen

ENERGY - DPE



NB. Quoted prices relate to euro transactions. Fluctuations in exchange rates are not the responsibility of the agency or those representing it. The agency and its representatives are not authorised to make or give guarantees relating to the property. These particulars do not form part of any contract but are to be taken as a general representation of the property. Any areas, measurements or distances are approximate. Text, photographs and plans, where applicable, are for guidance only. Leggett and its representatives have not tested services, equipment or facilities and cannot guarantee the same.

Particulars for off-plan purchases are intended as a guide only. Final finishes to the property may vary. Purchasers are advised to engage a solicitor to check the plans and specifications as laid out in their purchase contract with the developer.

DESCRIPTION

The cottage has been decorated to take advantage of the dual aspect which makes it really light and airy with exposed beams and masses of character throughout. To the ground floor there is the main living room with kitchen to one side with space for a dining table. There is the benefit of a ground floor bedroom, a good sized double, with ensuite bathroom - this room has a door to the outside.

On the first floor there are a further two bedrooms, both doubles, but one very large, and a family bathroom.

Directly outside the house there is room for a table and chairs so you can sit out and enjoy the sun and just a short distance away a garden, once the vegetable plot, with shed.

NOTES