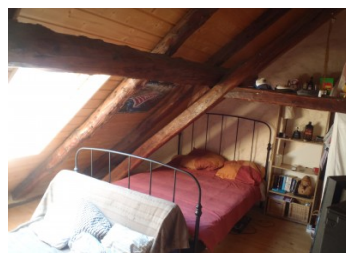
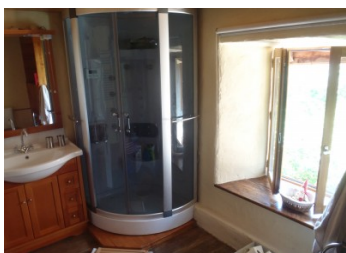
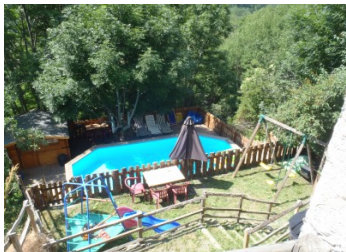


Serre Chevalier, 18th century renovated mountain chalet with separate building having 2 independent apartments. PRICE REDUCED FOR QUICK SALE !

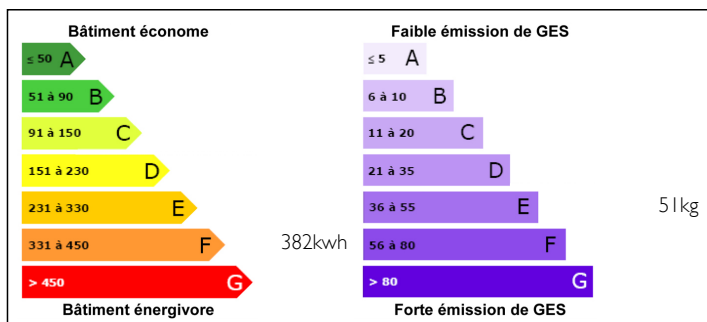


## INFORMATION

Town:	SERRE CHEVALIER
Department:	Hautes Alpes
Bed:	8
Bath:	7
Floor:	227 m2
Plot Size:	100 m2



## ENERGY - DPE



NB. Quoted prices relate to euro transactions. Fluctuations in exchange rates are not the responsibility of the agency or those representing it. The agency and its representatives are not authorised to make or give guarantees relating to the property. These particulars do not form part of any contract but are to be taken as a general representation of the property. Any areas, measurements or distances are approximate. Text, photographs and plans, where applicable, are for guidance only. Leggett and its representatives have not tested services, equipment or facilities and cannot guarantee the same.

Particulars for off-plan purchases are intended as a guide only. Final finishes to the property may vary. Purchasers are advised to engage a solicitor to check the plans and specifications as laid out in their purchase contract with the developer.



## DESCRIPTION

### The House...

This terraced village chalet is over 400 years old and has been renovated so as to provide a comfortable family home.

The main building has the dining room and kitchen on the ground floor as well as an office and music room. Up on the next floor is a large lounge with exposed beams and wooden floors. There are 2 bathrooms on this floor with independent water heaters. A side door opens out to a small breakfast balcony with views over Villeneuve village.

Wooden staircases lead up to the 5 large bedrooms 2 of which have en suite shower rooms.

Across the alley is the annexe building comprising of 2 independent units. There is a 1 bedroom and 2 bedroom apartment with lounge/kitchen, shower room and w/c. Each has its own entrance and south facing views over the ski domain. They currently bring in a monthly income of 1100 € per month, though weekly rentals could easily increase this figure.

Outside, below the house are the terraced gardens. They are on 3 different levels with a kiddies play area, an eating area and finally the pool and BBQ. This garden area has been wonderfully designed to get the best out of the steep slope and still enjoy the spectacular views of the Serre Chevalier Ski domain. The terraced gardens approx 100 m<sup>2</sup>.

### The Area...

Les...

## NOTES