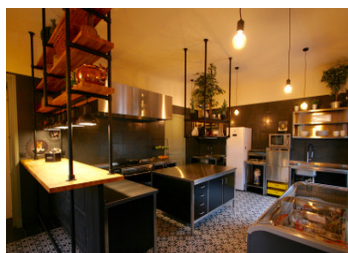
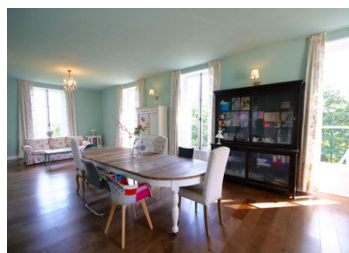
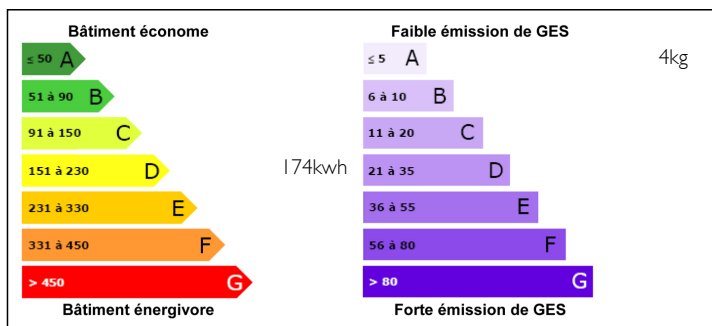


Magnificently renovated 19th century chateau



ENERGY - DPE



INFORMATION

Town:	Châteauneuf-la-Forêt
Department:	Haute-Vienne
Bed:	4
Bath:	2
Floor:	604 m2
Plot Size:	169025 m2

IN BRIEF

This amazing chateau on top of a hill fulfils your dreams. All amenities are a five-minute drive away and Limoges with its international airport is only a one-hour drive.

NB. Quoted prices relate to euro transactions. Fluctuations in exchange rates are not the responsibility of the agency or those representing it. The agency and its representatives are not authorised to make or give guarantees relating to the property. These particulars do not form part of any contract but are to be taken as a general representation of the property. Any areas, measurements or distances are approximate. Text, photographs and plans, where applicable, are for guidance only. Leggett and its representatives have not tested services, equipment or facilities and cannot guarantee the same.

Particulars for off-plan purchases are intended as a guide only. Final finishes to the property may vary. Purchasers are advised to engage a solicitor to check the plans and specifications as laid out in their purchase contract with the developer.



DESCRIPTION

In the middle of the countryside of Briance Combade, at the edge of Parc naturel régional de Millevaches en Limousin, you will find this well maintained castle on top of a hill with stunning views. There is more than enough space to develop a business like a chambre d'hotes, if that is of your interest. If not, it would be a magnificent building to reside in.

You enter the property over the beautiful drive lane with big mature trees on both sides. Continuing the driveway you will find the castle with a good-sized heated swimming pool in front of it. Following a trail through your own forests you will have magnificent views over the countryside, and arrive at a tranquil pond to read a book, or do some fishing.

The current owners renovated the castle completely. It has a new roof, double-glazing, and a wood fuelled central heating system.

It consists of a total of 15 rooms:

- A big reception room (68 m2),
- Four big bedrooms (25, 17, 23, 44 m2);
- Two living rooms (60 and 65 m2);
- Three kitchens (32, 45, 52 m2),
- Two bathrooms (11 and 23 m2),
- Heating room (45 m2),
- An office room (17 m2),
- A multifunctional room (58 m2),
- A dressing (16 m2).

Next to the castle, you find a small building with a coffee/tea drinking area, and a nice wide terrace in front.

The total land that comes with it is 17ha, of which 7 Ha is forest, and 10 Ha is...

LOCAL TAXES

Taxe foncière: 3156 EUR

NOTES