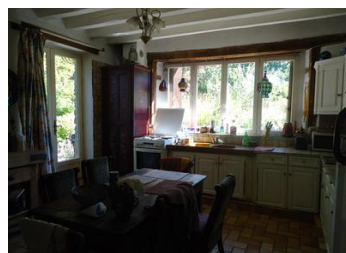


Traditional French 4 Bedroom Stone Detached Barn - Heart of the Correze!!



INFORMATION

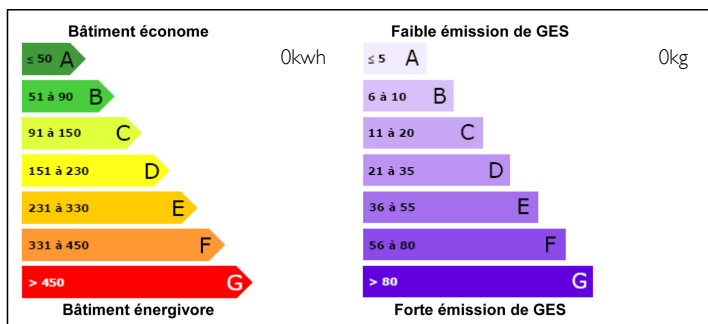
Town:	MEILHARDS
Department:	Correze
Bed:	2
Bath:	1
Floor:	150 m2
Plot Size:	1270 m2



IN BRIEF

REDUCTION TO 115,540K EUROS! Leggetts are pleased to Market this Beautiful Excellent 3/4 Bedroom Detached Stone Barn with a Detached Garage/workshop and South Facing Garden with Fruit Trees, Pond and a Well! Ideally situated in a Traditional French Village of Meilhards and offers good amenities i.e. Bar/Restaurant, Post Office, Primary School, Convenience Store, Hairdressers, Bakery and Petrol Station. Meilhards is ideally located just 15 minutes away from the A20 Gateway Motorway and 1 hours drive to 2 International Airports of Brive and Limoges and the added benefit of the nearby French Style Villages of Chamberet, Treignac, Masseret and Uzerche.

ENERGY - DPE



NB. Quoted prices relate to euro transactions. Fluctuations in exchange rates are not the responsibility of the agency or those representing it. The agency and its representatives are not authorised to make or give guarantees relating to the property. These particulars do not form part of any contract but are to be taken as a general representation of the property. Any areas, measurements or distances are approximate. Text, photographs and plans, where applicable, are for guidance only. Leggett and its representatives have not tested services, equipment or facilities and cannot guarantee the same.

Particulars for off-plan purchases are intended as a guide only. Final finishes to the property may vary. Purchasers are advised to engage a solicitor to check the plans and specifications as laid out in their purchase contract with the developer.



DESCRIPTION

Upon arrival to this Beautiful Stone Detached Barn is a Sun Drenched Patio with Outside Garden, its Water Well and established Flowers! This Barn offers excellent family living room come dining room space (8m x 13m) and Includes Two Woodburners and Patio Doors leading into the south facing garden. The family size kitchen (5.5m x 5m) is a well equipped cream country style kitchen and all its appliances and table and 6 chairs. Off the kitchen area is a Double Bedroom (3.6m x 4.5m), Utility Room (2.4m x 3.9m) and a family size bathroom including a shower and a downstairs toilet (3.5m x 2.4m) and is ideal for an elderly relative or a disabled person. Upstairs offers another great size bedroom (4.1m x 8m) and could fit several beds in it plus another Mezzanie Area that could be used as a hobby room etc. The great thing about this barn is the attic area which is well insulated and ripe for conversion! Garden offers plum and apple trees, a lovely pond and some outbuildings too plus a Massive Workshop! DEFINATELY WORTH A VIEW!!!

LOCAL TAXES

Taxe foncière:

367 EUR

NOTES