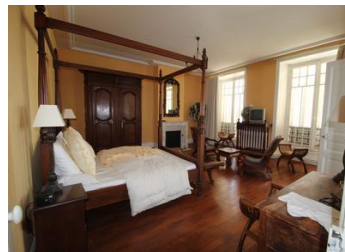
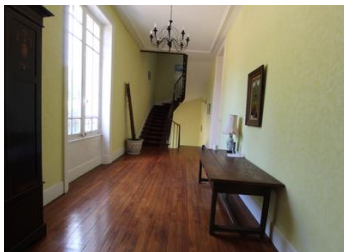
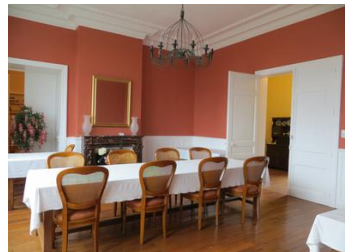


Manor house ,hotel, conference centre. With 4 gites, swimming pool, tennis court, gym, seminar room, Private apartment and great views of the Vienne river valley , just...



INFORMATION

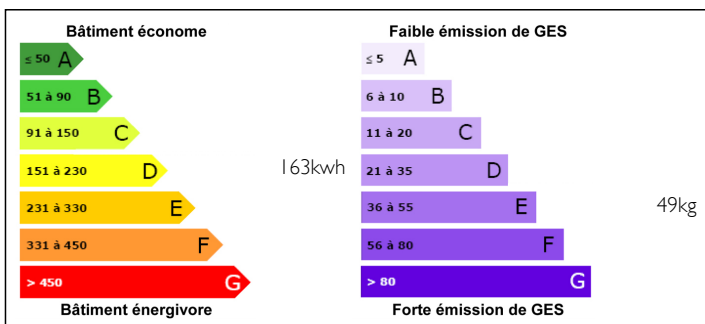
Town:	PANAZOL
Department:	Haute Vienne
Bed:	13
Bath:	13
Floor:	877 m2
Plot Size:	26204 m2



IN BRIEF

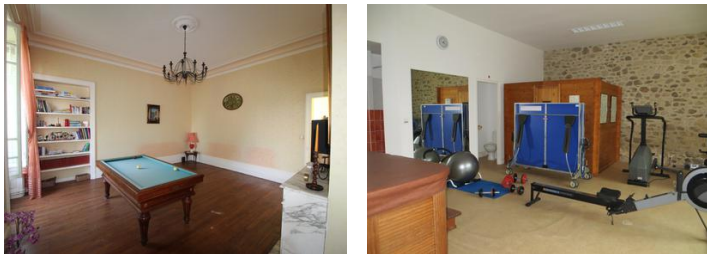
This 18th century manor house and gites complex has been renovated to a high standard. It sits overlooking the Vienne river and surrounded by wonderful countryside, yet it is only 10 minutes away from the region's capital, Limoges, famous for its porcelain industry and steeped in history. Also 500m away is one of the best 18 hole golf courses in the Limousin, currently with preferential green rates to clientèle of the manor. The complex was run as a luxury B&B resort with 5 letting rooms and suites and four self-catering gites. The manor house itself could easily be a large family home with the gites business run separately.

ENERGY - DPE



NB. Quoted prices relate to euro transactions. Fluctuations in exchange rates are not the responsibility of the agency or those representing it. The agency and its representatives are not authorised to make or give guarantees relating to the property. These particulars do not form part of any contract but are to be taken as a general representation of the property. Any areas, measurements or distances are approximate. Text, photographs and plans, where applicable, are for guidance only. Leggett and its representatives have not tested services, equipment or facilities and cannot guarantee the same.

Particulars for off-plan purchases are intended as a guide only. Final finishes to the property may vary. Purchasers are advised to engage a solicitor to check the plans and specifications as laid out in their purchase contract with the developer.



DESCRIPTION

What a fantastic opportunity for all kinds of business potential !! You enter the grounds to the property down a long gravelled driveway passing the tennis court and 17m swimming pool. The house sits facing the drive with the rest of the complex reaching around to the right.

The main house has large imposing doors into a light entrance hall. Off this hallway and all looking out to the Vienne river valley are the reception rooms. There is a billard room (35m²) which doubles as the guest lounge. The dining room (35m²) and the kitchen. The kitchen has its own door onto the hallway but is also accessible from the dining room. The kitchen (20m²) is fully fitted and has a large pantry. The last reception room (48m²) is used solely by the owners as their lounge and has an office (11m²) attached. Towards the other end of the hallway is a large utility room (20m²) and storage space

The impressive staircase leads up from the hallway to a long landing and four of the sumptuous bedrooms. All the guest bedrooms have their own bathrooms and have been done to a very high standard. The first is a large double (33m²), the second is the same (32m²). The third is a suite with 2 bedrooms sharing a Jack and Jill bathroom (84m² total).

On the second floor of the manor is a twin room (29m²) with a bathroom and a suite (45m²) with two...

NOTES