

A well appointed 3 bedroom house with a walled garden with a well and bar/terrace in a tranquil setting.

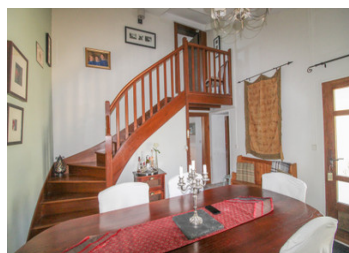


## INFORMATION

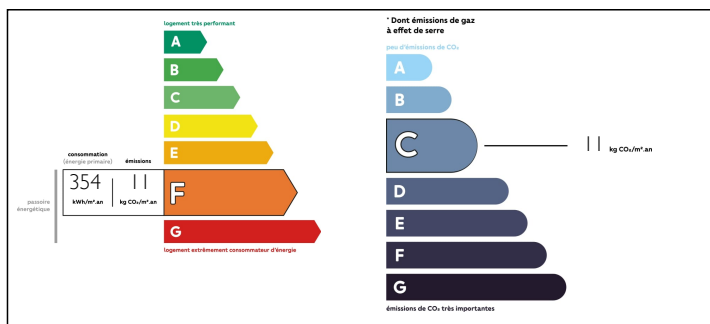
Town:	Saint-Sornin-la-Marche
Department:	Haute-Vienne
Bed:	3
Bath:	1
Floor:	120 m2
Plot Size:	500 m2

## IN BRIEF

Well appointed house with 3 bedrooms and garden with bar/terrace. This lovely family home is in the centre of a quiet village but is not overlooked. It consists of a living room, kitchen, dining room, separate toilet and bathroom. Access to a walled garden with a bar/terrace. A stunning property in a beautiful location and close to the towns of Le Dorat and Bellac - easy access to the airports - Limoges 30 minutes and Poitiers 1hr30.

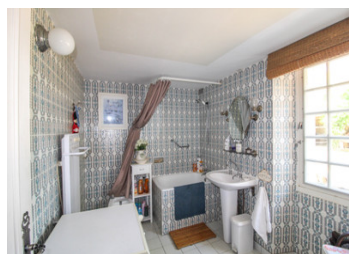


## ENERGY - DPE



NB. Quoted prices relate to euro transactions. Fluctuations in exchange rates are not the responsibility of the agency or those representing it. The agency and its representatives are not authorised to make or give guarantees relating to the property. These particulars do not form part of any contract but are to be taken as a general representation of the property. Any areas, measurements or distances are approximate. Text, photographs and plans, where applicable, are for guidance only. Leggett and its representatives have not tested services, equipment or facilities and cannot guarantee the same.

Particulars for off-plan purchases are intended as a guide only. Final finishes to the property may vary. Purchasers are advised to engage a solicitor to check the plans and specifications as laid out in their purchase contract with the developer.



## DESCRIPTION

This a beautiful home throughout with 3 bedrooms and garden with bar/terrace. This lovely family home is in the centre of a village but is not overlooked. The house consists of a traditional kitchen with a tiled floor and pastel units. To the left of the kitchen is the living room, a good size room with a fireplace housing a traditional wood burner. All the windows in the house are original but are glazed to keep the house warm in the winter. From the kitchen, at the back of the house there is a stunning dining room with floor to ceiling height with a view of the beautiful wooden swirled staircase. Also, there is a separate toilet and bathroom. On the first floor, you will find three double bedrooms, two of the bedrooms have views to the front of the house and the third with storage cupboard is at the back of the house. The walled garden is attached with a bar/terrace with lighting perfect for relaxing on. In addition, there are a number of trees for shade and a spectacular wisteria along the back wall. This property is a lovely home located in a calm and tranquil setting only 10 minutes drive from the towns of Le Dorat and to Bellac both offering all your amenities. The airports are within easy reach as well as the train stations at Le Dorat/Bellac - Limoges -30 minutes and Poitiers 1hr30.

-----

Information about risks to which this...

## NOTES