

Magnificent Alpine Chateau 537m2 comprising 9 well-appointed individual apartments.



INFORMATION

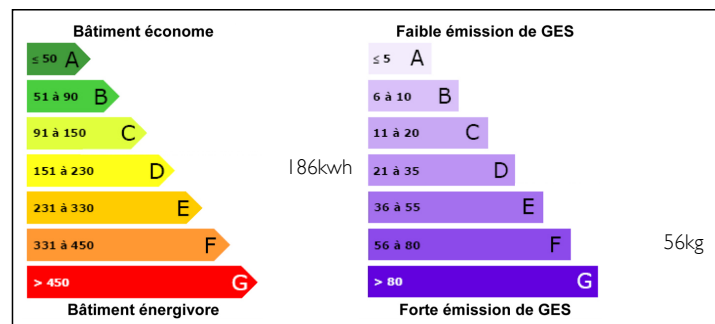
Town:	Oz
Department:	Isère
Bed:	10
Bath:	10
Floor:	537 m2
Plot Size:	3390 m2

IN BRIEF

The property sits on a private garden 3390m2 with garage and annexe and ample parking for 12 vehicles. Located in the traditional village of Oz which sits at the foot of the Grand Rousses near Alpe d'Huez in the heart of the Oisans region in the French Alps, 'Le Château d'Oz' is an amazing place. For those who love the mountains this property offers a fantastic opportunity to get away from city life and start over in an area that offers the best of all that is the French Alps. Set in a large private garden with mature trees at the entrance to the village, the Chateau d'Oz is an impressive building that really catches the eye. Whether it be Skiing, Cycling, Mountain-biking, Hillwalking, Rock Climbing, River sports and much more, all these activities are within a stones-throw of this beautiful mountain village. The skiing in...

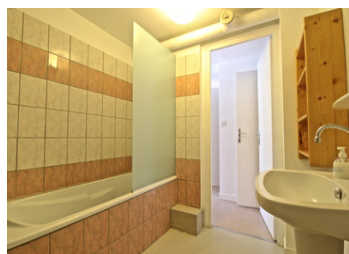


ENERGY - DPE



NB. Quoted prices relate to euro transactions. Fluctuations in exchange rates are not the responsibility of the agency or those representing it. The agency and its representatives are not authorised to make or give guarantees relating to the property. These particulars do not form part of any contract but are to be taken as a general representation of the property. Any areas, measurements or distances are approximate. Text, photographs and plans, where applicable, are for guidance only. Leggett and its representatives have not tested services, equipment or facilities and cannot guarantee the same.

Particulars for off-plan purchases are intended as a guide only. Final finishes to the property may vary. Purchasers are advised to engage a solicitor to check the plans and specifications as laid out in their purchase contract with the developer.



DESCRIPTION

Chateau d'Oz offers a huge private living space. At present it is divided into 9 separate apartments which can be rented out separately or as a whole for large groups. All of the apartments have en-suite shower rooms or bathrooms. They typically consist of a bed/sitting room with a kitchen and a bathroom. They are all around 35m²/ 375 sq feet, providing a very comfortable living area for clients. Half of them have full-sized baths. The others all have shower cubicles. The main apartments are each featured in the 360 virtual tours linked in the advert as well as the sitting room.

Each apartment has comfortable beds in spacious bedrooms that can be either a double or two singles. Some have two bedrooms sharing a bathroom; all apartments have kitchens. The accommodation is therefore spacious and flexible.

All south-facing suites have a magnificent view over the valley to the mountains beyond. An inspiring and uplifting way to start the day with a coffee or simply to enjoy a well-deserved glass of bubbly at the end of a tiring days sport.

There is also a fantastic dining room with professional kitchen attached where breakfast or dinner can be served for those wishing B&B or half board. In the evenings there is a fabulous vaulted sitting room to enjoy your preferred tipple and chat about the day's events.

For those with enough energy left there is a games room with table tennis and table...

LOCAL TAXES

Taxe foncière: 4370 EUR

NOTES