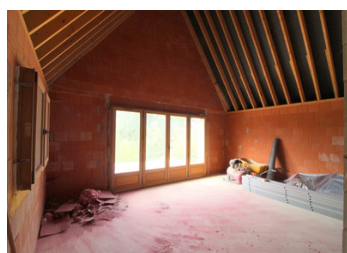
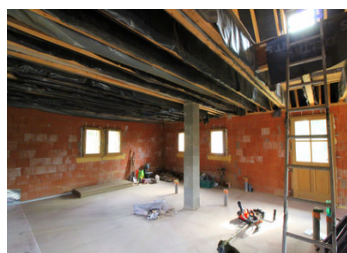


Opportunity to complete this house to your own taste - all the hard work has been done!



## INFORMATION

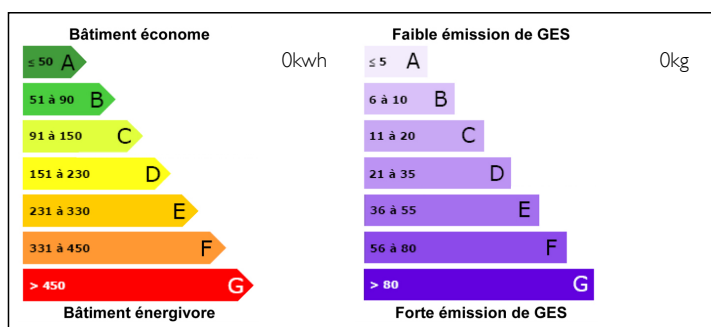
Town:	Domme
Department:	Dordogne
Bed:	3
Bath:	2
Floor:	110 m2
Plot Size:	1767 m2



## IN BRIEF

This new build on the outskirts of Domme is a great opportunity. It's watertight, electricity and water are on the roadside, the septic tank has been installed in accordance with the latest regulations. It has plans for 3 bedrooms, 2 bathrooms and a garage under the terrace.

## ENERGY - DPE



NB. Quoted prices relate to euro transactions. Fluctuations in exchange rates are not the responsibility of the agency or those representing it. The agency and its representatives are not authorised to make or give guarantees relating to the property. These particulars do not form part of any contract but are to be taken as a general representation of the property. Any areas, measurements or distances are approximate. Text, photographs and plans, where applicable, are for guidance only. Leggett and its representatives have not tested services, equipment or facilities and cannot guarantee the same.

Particulars for off-plan purchases are intended as a guide only. Final finishes to the property may vary. Purchasers are advised to engage a solicitor to check the plans and specifications as laid out in their purchase contract with the developer.

## DESCRIPTION

Domme - 1.5 kms

Sarlat - 12 kms

Brive Airport - 48 kms

-----

Information about risks to which this property is exposed is available on the Géorisques website : <https://www.georisques.gouv.fr>

## NOTES