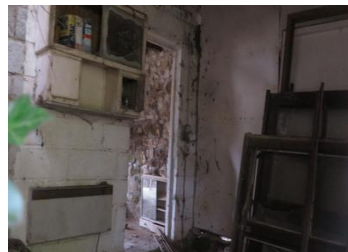


A derelict property in a large plot within the beautiful Suisse Normande



INFORMATION

Town:	STE HONORINE LA
Department:	GUILLAUME Orne
Bed:	0
Bath:	0
Floor:	30 m2
Plot Size:	2132 m2

IN BRIEF

A lot of imagination and hard work is needed but the result is sure to be worth it! This property is not about the house it is about its location within a popular and touristic area of Normandy, its proximity of la Roche d'Oetre, Pont D'Ouilly and Clecy. The grounds of over half of an acre are secluded and will provide a haven of tranquility for nature lovers or those who need to get away from the madness of the world and replenish their batteries.

ENERGY - DPE



NB. Quoted prices relate to euro transactions. Fluctuations in exchange rates are not the responsibility of the agency or those representing it. The agency and its representatives are not authorised to make or give guarantees relating to the property. These particulars do not form part of any contract but are to be taken as a general representation of the property. Any areas, measurements or distances are approximate. Text, photographs and plans, where applicable, are for guidance only. Leggett and its representatives have not tested services, equipment or facilities and cannot guarantee the same.

Particulars for off-plan purchases are intended as a guide only. Final finishes to the property may vary. Purchasers are advised to engage a solicitor to check the plans and specifications as laid out in their purchase contract with the developer.



DESCRIPTION

The property consists of an old stone and colombage one storey farmer's cottage. This was converted in the 1970's as a holiday home on two floors but has since lost its roof and become derelict. It sits nicely within its plot on the edge of a small wood in beautiful countryside. A few beautiful and large houses are nearby but out of sight ensuring that this property has the potential of being transformed into a beautiful home and a good investment.

LOCAL TAXES

Taxe foncière: **49 EUR**

NOTES