

Stunning luxury 4-bedroom C11th Abbey conversion with independent 2-bedroom guest house at 60660 Rousseloy.

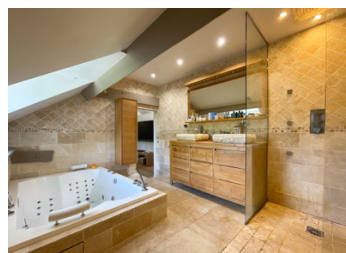


INFORMATION

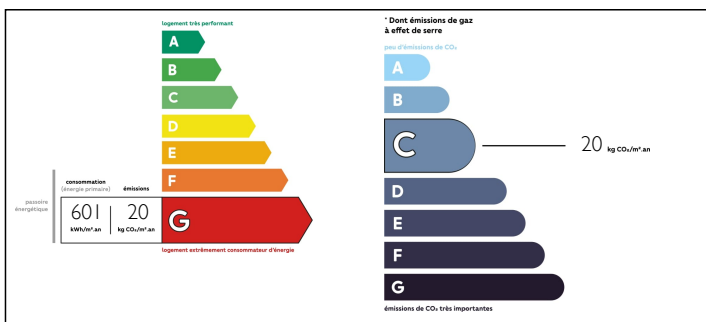
Town:	Rousseloy
Department:	Oise
Bed:	8
Bath:	5
Floor:	413 m2
Plot Size:	1710 m2

IN BRIEF

In the peaceful village of Rousseloy, situated just 49 km north of Paris this beautifully restored abbey provides modern luxury living in a building with over 800 years of history. The spacious interior is full of original features including rib vaulted and cathedral ceilings, stone fireplaces, wood paneling and limestone and oak parquet floors. The accommodation is arranged as follows: Ground floor entrance, WC, high class kitchen and breakfast area with ancient rib vaulted ceilings 35m2, beautiful dining room. A superb terrace and front garden can be accessed from the kitchen and living room. First floor: 2 magnificent reception rooms 88m2 with access to a raised terrace, bedroom, bathroom and WC. Second floor: 2 landings, 3 bedrooms, 3 bathrooms and WCs. 2 bedroom guest house with kitchen, dining room, living room opening onto a large BBQ terrace. Outside: Double garage, offroad parking, gardens with magnificent weeping willow. Convenient for Paris and...



ENERGY - DPE



NB. Quoted prices relate to euro transactions. Fluctuations in exchange rates are not the responsibility of the agency or those representing it. The agency and its representatives are not authorised to make or give guarantees relating to the property. These particulars do not form part of any contract but are to be taken as a general representation of the property. Any areas, measurements or distances are approximate. Text, photographs and plans, where applicable, are for guidance only. Leggett and its representatives have not tested services, equipment or facilities and cannot guarantee the same.

Particulars for off-plan purchases are intended as a guide only. Final finishes to the property may vary. Purchasers are advised to engage a solicitor to check the plans and specifications as laid out in their purchase contract with the developer.



DESCRIPTION

Enjoying an exclusive situation without vis-a-vis, this high status detached 5-bedroom stone house at Rousseloy comes with over 800 years of history. And when you look at the dimensions of the stone walls and the quality of the construction of this former abbey it's hard to imagine that it won't still here in another 800 years.

Rousseloy is a village situated in a peaceful rural location 49 km north of Paris and a short drive to Chantilly from where you can travel to Paris by train in less than 30 minutes.

The historic towns of Chantilly (famous for its hippodrome and castle) and Senlis are a short drive away and the area remains one of the most sought-after residential areas because of its beauty and the excellent quality of life it offers.

The house comprises: Ground floor: Entrance 16m², visitors WC, magnificent dining room 30m² and an astonishing kitchen 35m² that lies beneath ancient rib vaulted ceilings which are illuminated to create a magical atmosphere.

The kitchen is equipped with high quality De Kercoet kitchen units and with a La Cornue gas range cooker. There are beautiful limestone floors throughout this level of the house.

First floor: A stone staircase leads up to a living room of 42m² with fireplace, wood panelling, limestone floor and with access onto a raised wooden terrace of 46m² with fountain that overlooks the garden. A corridor 8.5m² leads to a fitness room 8m² that could equally be used as...

LOCAL TAXES

Taxe foncière: 2085 EUR

NOTES