

Charming 8 bed chateau for sale set in 16,000m2 of land at Frontenex near Albertville

EXCLUSIVE

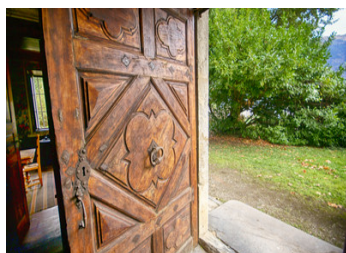


INFORMATION

Town:	Frontenex
Department:	Savoie
Bed:	6
Bath:	2
Floor:	400 m2
Plot Size:	16000 m2

IN BRIEF

Located in the centre of Frontenex, this small 8 bedroom chateau with 400m2 habitable, is in original condition and has remained in the same family since it was built in the 1734. This is the first time it has been available to buy in nearly 300 years. The spacious chateau interior has the original décor which will need to be restored sympathetically, but is not listed, allowing freedom to create a contemporary home with a rich heritage. The Chateau has a recent slate roof and some level of modernity such as electricity and mains drainage, but apart from that it will need a significant amount of creative passion, time and investment.

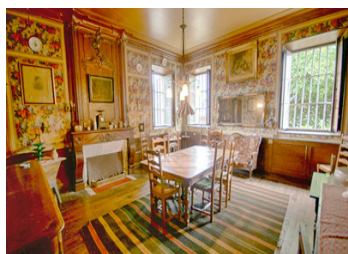
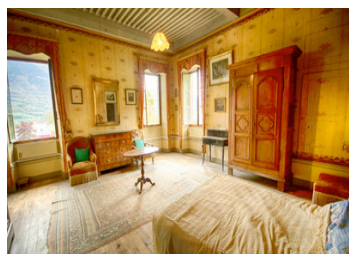


ENERGY - DPE



NB. Quoted prices relate to euro transactions. Fluctuations in exchange rates are not the responsibility of the agency or those representing it. The agency and its representatives are not authorised to make or give guarantees relating to the property. These particulars do not form part of any contract but are to be taken as a general representation of the property. Any areas, measurements or distances are approximate. Text, photographs and plans, where applicable, are for guidance only. Leggett and its representatives have not tested services, equipment or facilities and cannot guarantee the same.

Particulars for off-plan purchases are intended as a guide only. Final finishes to the property may vary. Purchasers are advised to engage a solicitor to check the plans and specifications as laid out in their purchase contract with the developer.



DESCRIPTION

Château

Ground floor

- Entrance hall - 25m²
- Living room - 31m²
- Bedroom 1 / Chapel - 9m²
- Office - 13m²
- Cloakroom - 5m²
- Kitchen - 30m²
- Dish / laundry room - 15m²
- Dining room - 30m²
- Orangery

Basement

- Cellar 1 - 10m²
- Cellar 2 - 10m²
- Vaulted cellar - 55m²

Mid-level floor

- Shower room - 7.5m²
- WC - 4m²
- Bathroom - 6.7m²
- Bedroom 2 - 12m²

First floor

- Small living room - 18m² with balcony
- Bedroom 3 - 32m²
- Dormitory - 33m²
- Bedroom 4 Blue, Tower 1 - 15.5m²
- Bedroom 5 - 31m²
- Laboratory Tower 2 - 16m²
- Bedroom 6 - 31m²
- Bedroom 7 - 24m² former servants' quarters

Information about risks to which this property is exposed is available on the Géorisques website : <https://www.georisques.gouv.fr>

NOTES