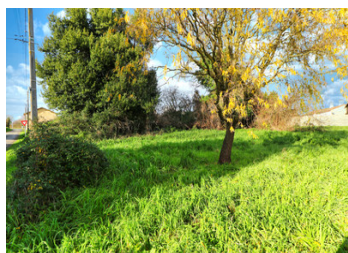


Half an acre of constructible land in a rural hamlet setting



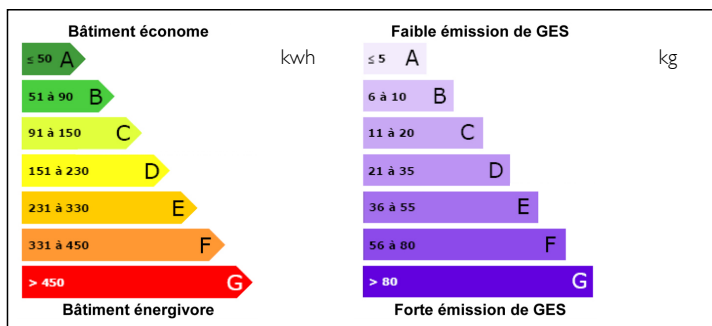
INFORMATION

Town:	Alloinay
Department:	Deux-Sèvres
Bed:	0
Bath:	0
Floor:	0 m2
Plot Size:	2310 m2

IN BRIEF

Nice plot of land to build a new house. Initial authorisation granted. Road access, and access to utilities : water, electricity etc. Land is slightly elevated from the road. Pleasant hamlet with bakery and restaurant a few minutes by car or bike. 10 minutes to Chef Boutonne for supermarket and commerce.

ENERGY - DPE



NB. Quoted prices relate to euro transactions. Fluctuations in exchange rates are not the responsibility of the agency or those representing it. The agency and its representatives are not authorised to make or give guarantees relating to the property. These particulars do not form part of any contract but are to be taken as a general representation of the property. Any areas, measurements or distances are approximate. Text, photographs and plans, where applicable, are for guidance only. Leggett and its representatives have not tested services, equipment or facilities and cannot guarantee the same.

Particulars for off-plan purchases are intended as a guide only. Final finishes to the property may vary. Purchasers are advised to engage a solicitor to check the plans and specifications as laid out in their purchase contract with the developer.



DESCRIPTION

null

Information about risks to which this property is exposed is available on the Géorisques website : <https://www.georisques.gouv.fr>

NOTES