

## Leasehold Restaurant 45 seats with grocery deli in Gilette

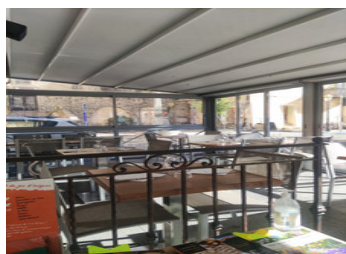


## INFORMATION

Town:	Gilette
Department:	Alpes-Maritimes
Bed:	0
Bath:	0
Floor:	130 m2
Plot Size:	30 m2

## IN BRIEF

Delicatessen restaurant located in the hinterland of Nice in Gilette in the heart of the village, this turnkey business.

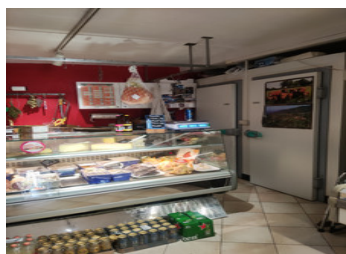


## ENERGY - DPE



NB. Quoted prices relate to euro transactions. Fluctuations in exchange rates are not the responsibility of the agency or those representing it. The agency and its representatives are not authorised to make or give guarantees relating to the property. These particulars do not form part of any contract but are to be taken as a general representation of the property. Any areas, measurements or distances are approximate. Text, photographs and plans, where applicable, are for guidance only. Leggett and its representatives have not tested services, equipment or facilities and cannot guarantee the same.

Particulars for off-plan purchases are intended as a guide only. Final finishes to the property may vary. Purchasers are advised to engage a solicitor to check the plans and specifications as laid out in their purchase contract with the developer.



## DESCRIPTION

Leasehold Restaurant grocery deli of approximately 150m<sup>2</sup>, with storage room behind the restaurant, business standards, ideal location in the heart of the village, this restaurant of approximately 50 covers with terrace, equipped with recent equipment, sold with stock.

The delicatessen located a few metres from the restaurant with the possibility of continuing this business, which gives a plus to the restaurant also sold with its stock.

Ideal for a start-up business.

-----  
Information about risks to which this property is exposed is available on the Géorisques website : <https://www.georisques.gouv.fr>

## NOTES