

Magnificent mountain house, beautiful view of Canigou

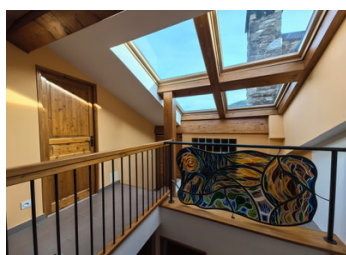
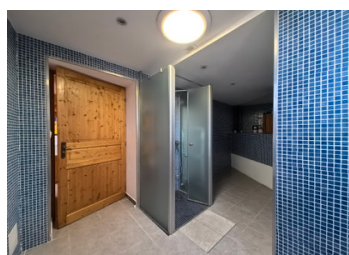


INFORMATION

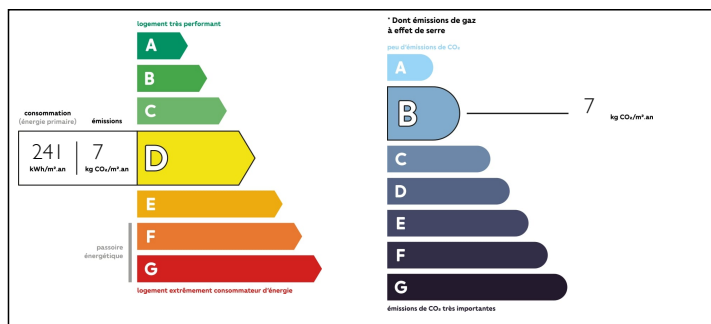
Town:	Ayguatèbia-Talau
Department:	Pyrénées-Orientales
Bed:	2
Bath:	1
Floor:	200 m2
Plot Size:	165 m2

IN BRIEF

Located in the heart of the Catalan Pyrenees, in the beautiful Cerdagne-Capcir-Conflent region, just 3 hours from Toulouse and Barcelona, 2 hours from Andorra and 1h20 from Perpignan, large stone house, on 3 levels, with views of the mountains, south facing, with great amenities

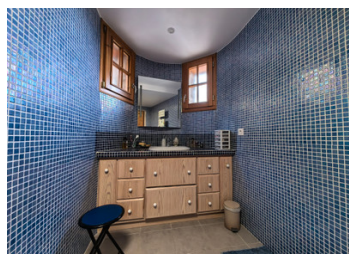


ENERGY - DPE



NB. Quoted prices relate to euro transactions. Fluctuations in exchange rates are not the responsibility of the agency or those representing it. The agency and its representatives are not authorised to make or give guarantees relating to the property. These particulars do not form part of any contract but are to be taken as a general representation of the property. Any areas, measurements or distances are approximate. Text, photographs and plans, where applicable, are for guidance only. Leggett and its representatives have not tested services, equipment or facilities and cannot guarantee the same.

Particulars for off-plan purchases are intended as a guide only. Final finishes to the property may vary. Purchasers are advised to engage a solicitor to check the plans and specifications as laid out in their purchase contract with the developer.



DESCRIPTION

Atypical stone house of 200m,
Equipped American kitchen with large living room
(Tulikivi Scandinavian stove),
2 bedrooms, office, bathroom, patio with Velux
window
Large garage for 3 cars (with Froling boiler supply
silo)
Basement with bathroom/WC
Garden, day water well

Information about risks to which this property is
exposed is available on the Géorisques website :
<https://www.georisques.gouv.fr>

NOTES