

Charming Presbytery with fantastic views of the Pyrenees, 4 bedrooms, terrace, gardens and pool Marciac

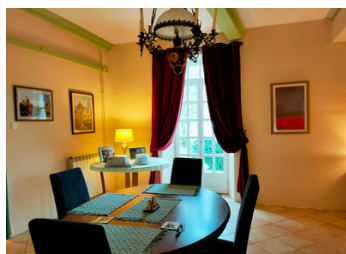
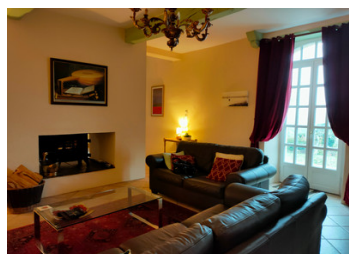


INFORMATION

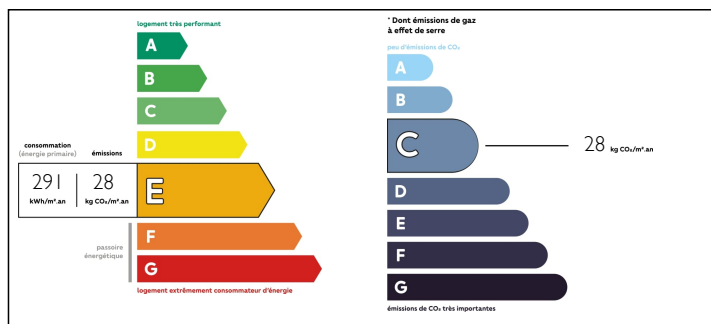
Town:	Marciac
Department:	Gers
Bed:	4
Bath:	3
Floor:	230 m2
Plot Size:	4615 m2

IN BRIEF

This charming, 17th Century Presbytery is situated in a small hamlet 10 minutes from all amenities and local markets in Marciac - renowned for its world famous annual jazz festival. The panoramic views from the property are unrivalled in the area.



ENERGY - DPE



NB. Quoted prices relate to euro transactions. Fluctuations in exchange rates are not the responsibility of the agency or those representing it. The agency and its representatives are not authorised to make or give guarantees relating to the property. These particulars do not form part of any contract but are to be taken as a general representation of the property. Any areas, measurements or distances are approximate. Text, photographs and plans, where applicable, are for guidance only. Leggett and its representatives have not tested services, equipment or facilities and cannot guarantee the same.

Particulars for off-plan purchases are intended as a guide only. Final finishes to the property may vary. Purchasers are advised to engage a solicitor to check the plans and specifications as laid out in their purchase contract with the developer.



DESCRIPTION

Close proximity to Tarbes (30 mins) and Auch (50 mins) and international airports of Lourdes/Tarbes (35 mins) and Toulouse (1hr15), this renovated home is ready to move straight into and suitable for families, couples or as a holiday home. Read more ...

This house opens onto a light and spacious entrance hall with a traditional oak staircase. To the right, a lounge with double sided wood burning stove opening onto the dining room, both with exposed beams and south facing double glazed French doors to the front garden and magnificent panoramic mountain views. A doorway leads into a gally kitchen with fitted units and dual aspect doors providing access to the rear covered terrace and front garden. A doorway leads from the lounge to a large bedroom opening out onto the rear terrace.

To the left of the entrance hall is a lovely spacious large bedroom, leading to a single bedroom and shower room.

The entrance hall leads through to a family bathroom and sitting room with doors out to the pool area and door leading to a large workshop annex opening onto the front garden.

Upstairs, the attic has been renovated to create 2 further bedrooms with exposed beams and velux windows, one bathroom and one shower room. There is further attic space ideal for storage.

Exterior

Along the front of the house is a small paved area with steps down to a gravel path leading to the attractive entrance gate. The garden features lawned areas and well...

NOTES