

Elegant and spacious house with 4 bedrooms, lovely garden, annex and outbuildings. Close to amenities.

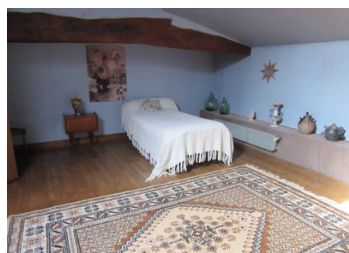


INFORMATION

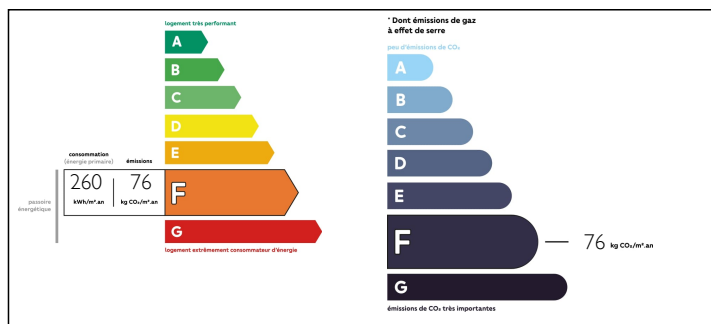
Town:	Savigné
Department:	Vienne
Bed:	5
Bath:	2
Floor:	195 m2
Plot Size:	3961 m2

IN BRIEF

This stunning house is situated in a quiet residential area, but not far from the popular town of Civray. There is a separate one bedroomed annex, a beautiful garden with mature trees and three garages.



ENERGY - DPE



NB. Quoted prices relate to euro transactions. Fluctuations in exchange rates are not the responsibility of the agency or those representing it. The agency and its representatives are not authorised to make or give guarantees relating to the property. These particulars do not form part of any contract but are to be taken as a general representation of the property. Any areas, measurements or distances are approximate. Text, photographs and plans, where applicable, are for guidance only. Leggett and its representatives have not tested services, equipment or facilities and cannot guarantee the same.

Particulars for off-plan purchases are intended as a guide only. Final finishes to the property may vary. Purchasers are advised to engage a solicitor to check the plans and specifications as laid out in their purchase contract with the developer.



NOTES

DESCRIPTION

MAIN HOUSE - Ground Floor

Entrance hall - attractive and bright hallway.

Sitting room - with feature fireplace and doors leading onto terrace.

Living room - very spacious 'L' shaped living room, including seating and dining areas and a study.

Kitchen - good quality wooden cabinets and nice dining area overlooking the garden.

Utility - practical space that could possibly be incorporated into the existing kitchen.

Bedroom 1 - elegant room with doors leading onto the terrace to the front of the property.

Bathroom - good sized bathroom, with plumbing for a washing machine.

Bedroom 2 - another spacious room.

Separate WC.

First Floor

Bedroom 3 - large room with exposed beams and leads into bedroom 4. There is plenty of room to create a corridor to separate these rooms.

Possible shower room - large enough to create a shower room, already has hand basin.

ANNEX - Single storey building with a simple kitchen with sink. Sitting room with door leading into garden. Double bedroom with shower room and WC. There is also a garage which contains the boiler.

EXTERIOR

Attractive driveway leads to parking areas and the attractive garden.

There is plenty of space for parking both in the 3 garages and on the drive. Next to the house is a large covered eating area. The garden is very attractive with plenty of established trees and shrubs, including fruit trees. The grounds are large enough for an in ground swimming pool (subject to permission).

LOCATION

In a quiet and attractive...