

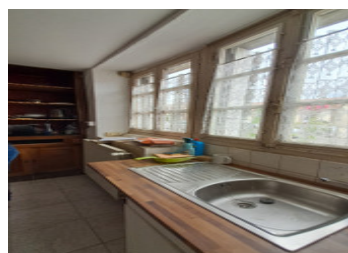
A habitable property with more room for renovation. Would suit a DIY builder. Great location and price.

EXCLUSIVE



INFORMATION

Town:	Chanu
Department:	Orne
Bed:	2
Bath:	1
Floor:	54 m2
Plot Size:	351 m2



IN BRIEF

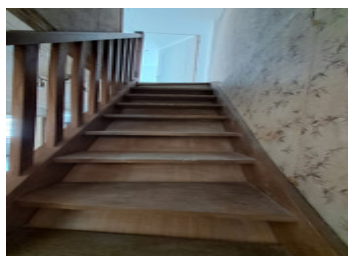
This tiny village property is a great buy for anyone who wants to live in an active village and its walking to all amenities, the butcher, the grocery store, the post office, hair dresser, restaurant and tabac/ cafe. A friendly and welcoming village. Larger towns in the region are Vire, Tinchebray, Sourdeval and the tourist town of Domfront. This house has been partly renovated but due to family issues has not been completed. It benefits from a well maintained gas heating system with a gas tank situated at the rear of the house.

ENERGY - DPE



NB. Quoted prices relate to euro transactions. Fluctuations in exchange rates are not the responsibility of the agency or those representing it. The agency and its representatives are not authorised to make or give guarantees relating to the property. These particulars do not form part of any contract but are to be taken as a general representation of the property. Any areas, measurements or distances are approximate. Text, photographs and plans, where applicable, are for guidance only. Leggett and its representatives have not tested services, equipment or facilities and cannot guarantee the same.

Particulars for off-plan purchases are intended as a guide only. Final finishes to the property may vary. Purchasers are advised to engage a solicitor to check the plans and specifications as laid out in their purchase contract with the developer.



DESCRIPTION

A dwelling house comprising :

- on the ground floor: an entrance hall, a kitchen, a hall and two rooms. At the second entrance is a back kitchen and loft above.

- first floor: a bedroom divided in two and a shower room,

- Un garage.

Plot of land laid to lawn.

Information about risks to which this property is exposed is available on the Géorisques website : <https://www.georisques.gouv.fr>

NOTES