

Large one-bedroom house with living room and kitchen, bathroom and shower room.

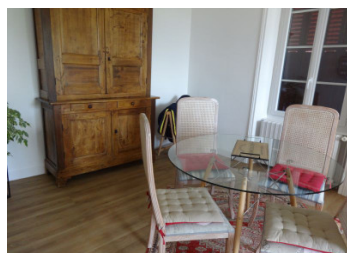


INFORMATION

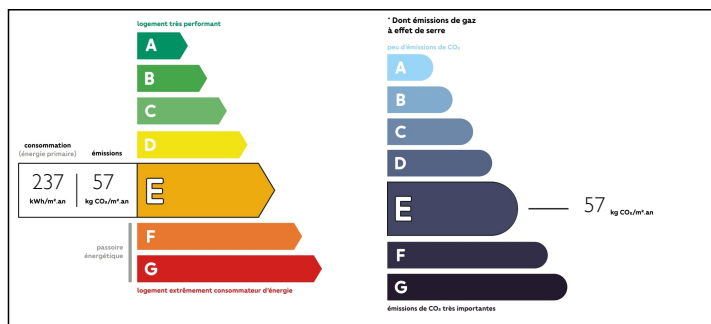
Town:	Lanobre
Department:	Cantal
Bed:	1
Bath:	2
Floor:	143 m2
Plot Size:	3000 m2

IN BRIEF

Large one bedroom house (143sqm), finished to a very high standard. The house is set in an enclosed garden of 3000sqm and is accessed via a small stone staircase. The combined lounge, kitchen and dining room (73sqm) is bright and airy, with double glazed windows to three sides. The lounge has a wood pellet stove which enhances the oil fueled heating. The pine wood floor leads to the dining area, with the kitchen and storage area. The kitchen is very functional allowing the preparing of meals to serve in the dining area. An beautiful Italian style bathroom with walk-in shower is also on the ground floor. A wooden staircase leads to the first floor, with a dressing room on the right at the top of the stairs. The large bedroom (56sqm) has windows on three sides offering views over the garden and towards the town. The bedroom has a shower...

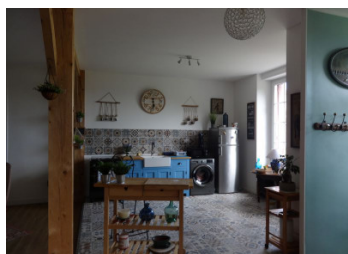


ENERGY - DPE



NB. Quoted prices relate to euro transactions. Fluctuations in exchange rates are not the responsibility of the agency or those representing it. The agency and its representatives are not authorised to make or give guarantees relating to the property. These particulars do not form part of any contract but are to be taken as a general representation of the property. Any areas, measurements or distances are approximate. Text, photographs and plans, where applicable, are for guidance only. Leggett and its representatives have not tested services, equipment or facilities and cannot guarantee the same.

Particulars for off-plan purchases are intended as a guide only. Final finishes to the property may vary. Purchasers are advised to engage a solicitor to check the plans and specifications as laid out in their purchase contract with the developer.



DESCRIPTION

Large one bedroom house (143sqm), finished to a very high standard.

The house is set in an enclosed garden of 3000sqm and is accessed via a small stone staircase. The combined lounge, kitchen and dining room (73sqm) is bright and airy, with double glazed windows to three sides. The lounge has a wood pellet stove which enhances the oil fueled heating.

The pine wood floor leads to the dining area, with the kitchen and storage area. The kitchen is very functional allowing the preparing of meals to serve in the dining area.

A beautiful Italian style bathroom with walk-in shower is also on the ground floor. A wooden staircase leads to the first floor, with a dressing room on the right at the top of the stairs. The large bedroom (56sqm) has windows on three sides offering views over the garden and towards the town. The bedroom has a shower room and further enhanced with small well designed areas for self preparation and dressing. Under the house is a full sized cellar, with lots of storage room and a small garage. There is another small concrete building of 40sqm used as storage.

A large double height garage, that could easily be converted to a living space. The garden is mainly lawn with a fenced area for a kennel and chicken coup.

Unknown to many, except the French nationals, Cantal, Haute-Loire and Puy-de-Dôme and Corrèze are hidden gems, in the middle of France, with fresh...

NOTES