

Beautiful contemporary house in Dordogne, 5 minutes from Châlus, set in 2900m2 of garden.



INFORMATION

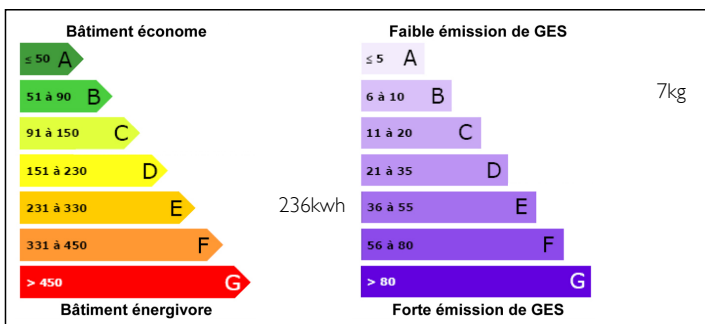
Town:	Saint-Pierre-de-Frugie
Department:	Dordogne
Bed:	3
Bath:	1
Floor:	200 m2
Plot Size:	2700 m2

IN BRIEF

The charm of the Dordogne at the gateway to the historic village of Châlus. Beautiful, large contemporary house with finished basement, set in an amazing green setting.

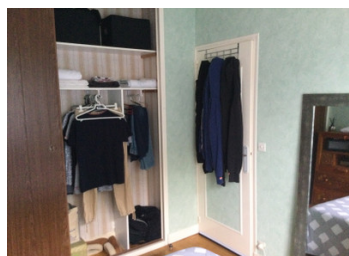
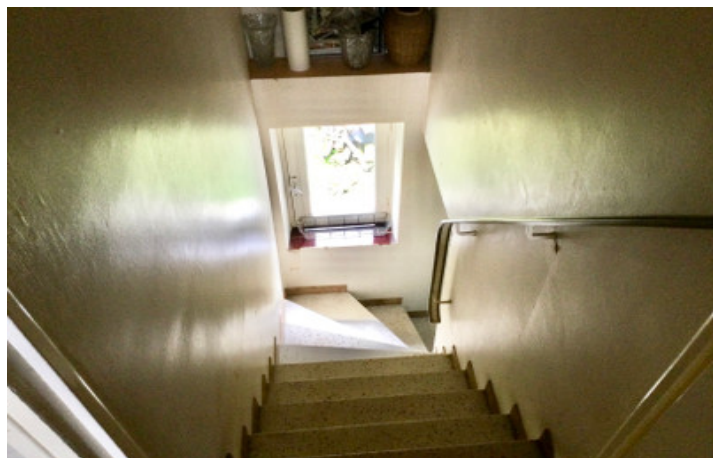


ENERGY - DPE



NB. Quoted prices relate to euro transactions. Fluctuations in exchange rates are not the responsibility of the agency or those representing it. The agency and its representatives are not authorised to make or give guarantees relating to the property. These particulars do not form part of any contract but are to be taken as a general representation of the property. Any areas, measurements or distances are approximate. Text, photographs and plans, where applicable, are for guidance only. Leggett and its representatives have not tested services, equipment or facilities and cannot guarantee the same.

Particulars for off-plan purchases are intended as a guide only. Final finishes to the property may vary. Purchasers are advised to engage a solicitor to check the plans and specifications as laid out in their purchase contract with the developer.



DESCRIPTION

Family or holiday home, ideal for children, perfect for parents, set in lush greenery. Ground floor: study, bedroom, wc, storage room, utility room, garage. First floor: kitchen, dining room/lounge with beautiful fireplace, bathroom, wc, two bedrooms. The garden is shaded by magnificent large trees.

Information about risks to which this property is exposed is available on the Géorisques website : <https://www.georisques.gouv.fr>

LOCAL TAXES

Taxe foncière: 1130 EUR

NOTES