

Wooden single storey, 4 bedroomed house built 2011, garage and garden. In the countryside close to Périgueux.

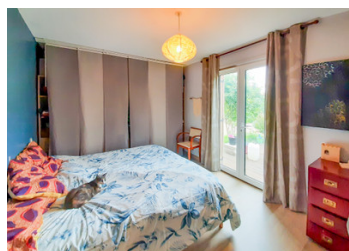


INFORMATION

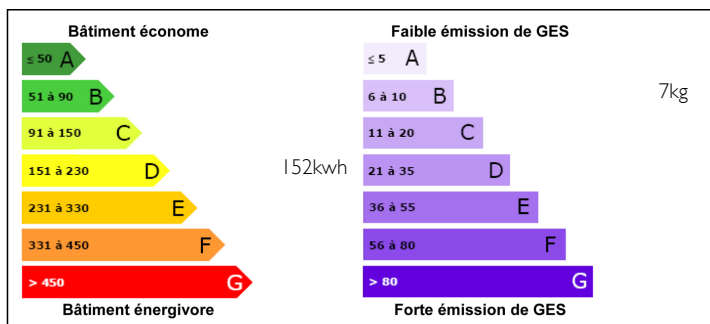
| | |
|-------------|-----------------------|
| Town: | Boulazac Isle Manoire |
| Department: | Dordogne |
| Bed: | 4 |
| Bath: | 1 |
| Floor: | 127 m2 |
| Plot Size: | 1249 m2 |

IN BRIEF

Nice wooden house in the countryside at the gates of Périgueux and its amenities. Come and discover this beautiful house of 127m2 built in 2011, on a plot of 1200m2 in the countryside of Boulazac. This single storey house consists of an entrance hall with cupboard with open plan kitchen (central island and utility room) and large lounge with wood burner. The night area has 4 bedrooms, ideal for a family or for entertaining and a bathroom (shower and bath). Nice enclosed garden with garage and garden shed. To discover ...



ENERGY - DPE



NB. Quoted prices relate to euro transactions. Fluctuations in exchange rates are not the responsibility of the agency or those representing it. The agency and its representatives are not authorised to make or give guarantees relating to the property. These particulars do not form part of any contract but are to be taken as a general representation of the property. Any areas, measurements or distances are approximate. Text, photographs and plans, where applicable, are for guidance only. Leggett and its representatives have not tested services, equipment or facilities and cannot guarantee the same.

Particulars for off-plan purchases are intended as a guide only. Final finishes to the property may vary. Purchasers are advised to engage a solicitor to check the plans and specifications as laid out in their purchase contract with the developer.



DESCRIPTION

Nice wooden house in the countryside at the gates of Perigueux and its amenities.

Come and discover this beautiful house of 127m2 built in 2011, on a plot of 1200m2 in the countryside of Boulazac.

This single storey house consists of an entrance hall with cupboard with open plan kitchen (central island and utility room) and large lounge with wood burner.

The night area has 4 bedrooms, ideal for a family or for entertaining and a bathroom (shower and bath).

Nice enclosed garden with garage and garden shed.

To discover ...

Information about risks to which this property is exposed is available on the Géorisques website : <https://www.georisques.gouv.fr>

LOCAL TAXES

Taxe foncière: 850 EUR

NOTES