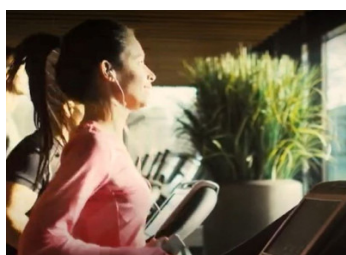
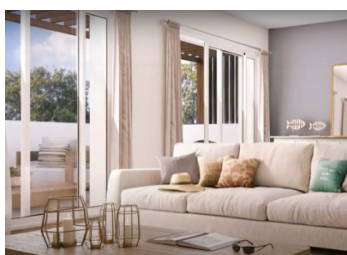
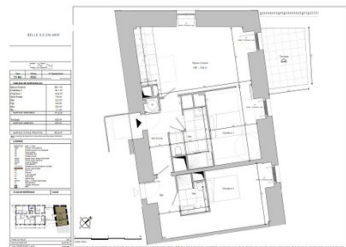
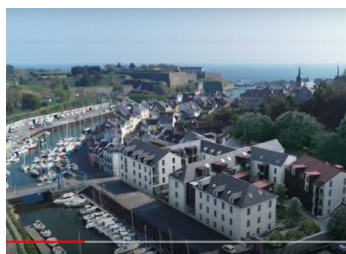


ONLY 1 LEFT! 2 bed newbuild apartment - be different, buy yourself an ISLAND GETAWAY, with a communal gym too!



INFORMATION

Town:	Le Palais
Department:	Morbihan
Bed:	2
Bath:	1
Floor:	77 m2
Outside Space:	9 m2

IN BRIEF

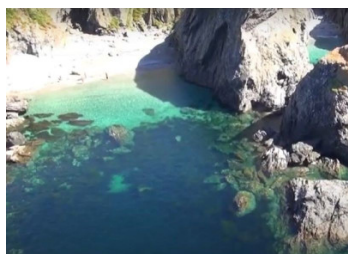
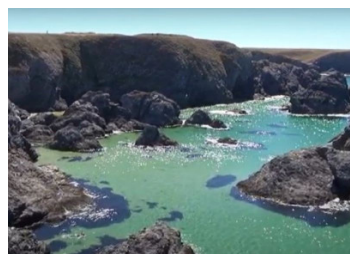
ONLY 1 LEFT on beautiful BELLE-ÎLE-EN-MER! Island life - grab yourself a fabulous 2 bed apartment new-build, available early 2024! If you are going to buy, why not buy something completely different? Island life, but only 45 mins by ferry to the mainland - what an amazing commute journey! Great for boat-lovers or for a getaway, or choose a completely different family life with primary schools and a college on the island. The development is opposite the waterway on the edges of one of the quays and just along from the harbour. The St Louis is part of the island's proud heritage, preserving the grand exterior whilst giving you brand new modern features and styling. And you get a residents' lounge and even a residents' gym room - go ahead and make your reservation now and you can be enjoying your new life by summer 2024, not long to wait at all!

ENERGY - DPE



NB. Quoted prices relate to euro transactions. Fluctuations in exchange rates are not the responsibility of the agency or those representing it. The agency and its representatives are not authorised to make or give guarantees relating to the property. These particulars do not form part of any contract but are to be taken as a general representation of the property. Any areas, measurements or distances are approximate. Text, photographs and plans, where applicable, are for guidance only. Leggett and its representatives have not tested services, equipment or facilities and cannot guarantee the same.

Particulars for off-plan purchases are intended as a guide only. Final finishes to the property may vary. Purchasers are advised to engage a solicitor to check the plans and specifications as laid out in their purchase contract with the developer.



DESCRIPTION

Properties still available range from 1 bed to 3 bed apartments, please get in touch for more information, or see other adverts A17410 (1 bed) and A17412 (3 bed):

1 bed apartments available (x3) ranging from approx 42m² to 46m² (279K€ to 339K€) (some with parking place);

2 bed apartments available (ONLY 1 LEFT!) approx 85m² (442K€) (parking place included)

3 bed apartments available (x4) ranging from approx 79.5m² to 99m² (595K€ to 745K€) (the top of the range being a gorgeous duplex with 2 parking places and a 'cellar').

This fabulous development has a stylish communal lounge area for residents and even its own gym room, so you can look after yourself then relax in your new home in a really beautiful setting!

Information about risks to which this property is exposed is available on the Géorisques website : <https://www.georisques.gouv.fr>

NOTES