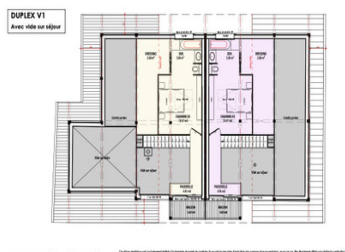


Duplex apartment FOR SALE in Notre Dame de Bellecombe close to Megeve. This apartment is sold as a bare shell



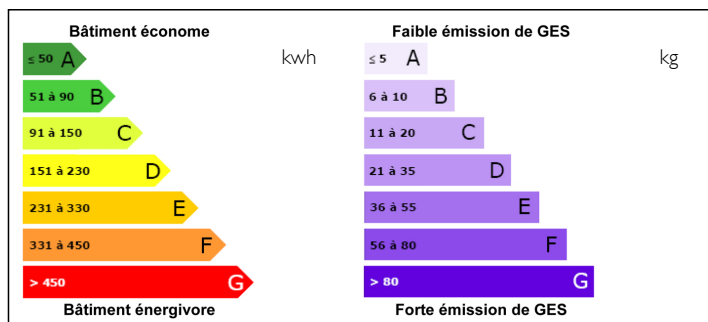
INFORMATION

| | |
|----------------|--------------------------|
| Town: | Notre-Dame-de-Bellecombe |
| Department: | Savoie |
| Bed: | 3 |
| Bath: | 2 |
| Floor: | 123 m2 |
| Outside Space: | 6 m2 |

IN BRIEF

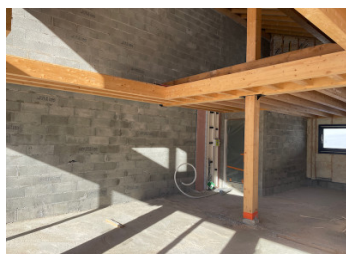
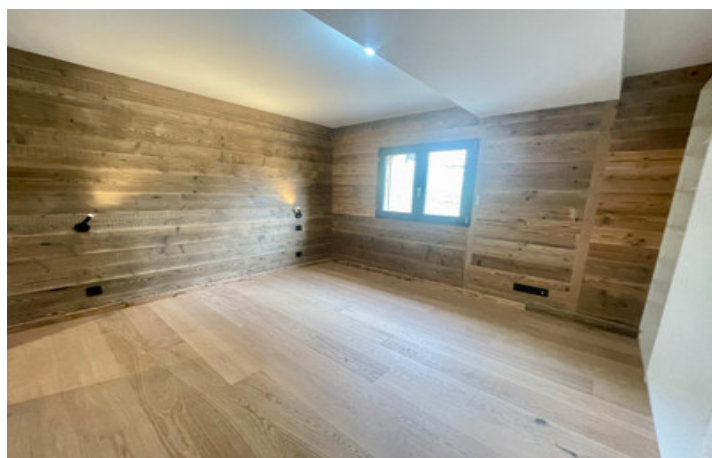
Located close to the ski area and the authentic village, this bare shell apartment over two floors provides you with the opportunity to create your dream home in the Alps. It is possible to appoint a project manager and have all the works carried out at your request or indeed to buy the property as it stands and carry out the works yourself or by other companies. Plans show 3 bedrooms and 2 bathrooms as well as a spacious double height living area, however you can complete the property to your own specification with as many or as few bedrooms as you wish.

ENERGY - DPE



NB. Quoted prices relate to euro transactions. Fluctuations in exchange rates are not the responsibility of the agency or those representing it. The agency and its representatives are not authorised to make or give guarantees relating to the property. These particulars do not form part of any contract but are to be taken as a general representation of the property. Any areas, measurements or distances are approximate. Text, photographs and plans, where applicable, are for guidance only. Leggett and its representatives have not tested services, equipment or facilities and cannot guarantee the same.

Particulars for off-plan purchases are intended as a guide only. Final finishes to the property may vary. Purchasers are advised to engage a solicitor to check the plans and specifications as laid out in their purchase contract with the developer.



DESCRIPTION

Duplex apartment FOR SALE in Notre Dame de Bellecombe close to Megeve . Sold as a bare shell with the option of a fully finished 3 bedroom 2 bathroom apartment. The traditional renovated farmhouse is made up of just 3 apartments and this stunning duplex has great views to the ski area and to the Mont Charvin .

The bare shell apartment over two floors provides you with the opportunity to create your dream home in the Alps. It is possible to appoint a project manager and have all the works carried out at your request or indeed to buy the property as it stands and carry out the works yourself or by companies

About the property:

Stunning views on the Mont Charvin
South facing
Typical Savoyard farmhouse
Amazing downhill and nordic skiing
With garage, basement storage and ski room

This spacious 120m² across 2 floors includes:

On ground floor 2 bedrooms with family shower room (approx 10m² each) and separate toilet
Upper floor: master bedroom (13,5m²) with ensuite with bathroom and walk-in wardrobe
Gallery mezzanine area with large 18m² balcony
Living space with a kitchen and lounge 45m²
Possibility of adding wood-burner
Balcony with mountain views 18,5m²

Considered the cradle of the Val d'Arly, Notre-Dame de Bellecombe, which is 1150 m above sea level, is a village with both family and authentic character, where nature remains intact and the local culture preserved. This family village resort offers many activities to please all. Benefiting from exceptional snowfall every winter, this ski...

NOTES