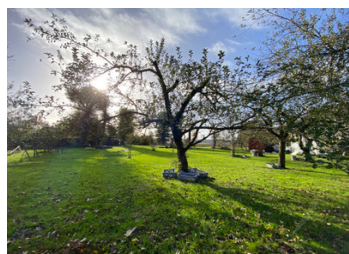


Building land in the charming village of Peillac.



## INFORMATION

Town:	Peillac
Department:	Morbihan
Bed:	0
Bath:	0
Floor:	0 m2
Plot Size:	1310 m2

## IN BRIEF

Building land with trees (oaks and fruit trees) in a charming village. Incredible view on the countryside, in a calm and quiet area. Close to amenities, schools, shops. Not overlooked, connected to mains drainage, boundaries marked. About 15 minutes from Redon, La Gacilly and Rochefort-en Terre, voted the most beautiful village in France Less than an hour from the beaches of the Gulf of Morbihan. Come and realize your project!

## ENERGY - DPE



NB. Quoted prices relate to euro transactions. Fluctuations in exchange rates are not the responsibility of the agency or those representing it. The agency and its representatives are not authorised to make or give guarantees relating to the property. These particulars do not form part of any contract but are to be taken as a general representation of the property. Any areas, measurements or distances are approximate. Text, photographs and plans, where applicable, are for guidance only. Leggett and its representatives have not tested services, equipment or facilities and cannot guarantee the same.

Particulars for off-plan purchases are intended as a guide only. Final finishes to the property may vary. Purchasers are advised to engage a solicitor to check the plans and specifications as laid out in their purchase contract with the developer.

## DESCRIPTION

null

-----

Information about risks to which this property is exposed is available on the Géorisques website :  
<https://www.georisques.gouv.fr>

## NOTES