

UNDER OFFER 2 Bedroomed house with attached barn, terrace and garden within walking distance to the village



INFORMATION

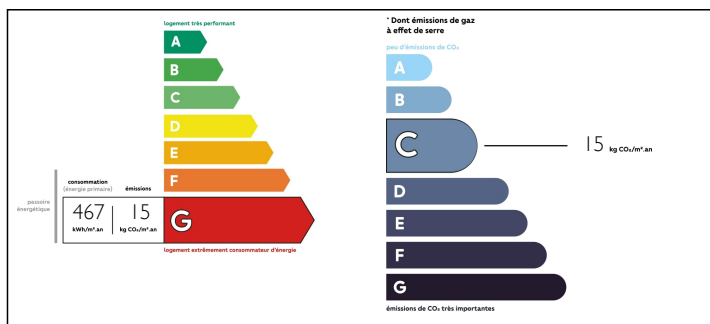
Town:	Bussière-Galant
Department:	Haute-Vienne
Bed:	2
Bath:	1
Floor:	85 m2
Plot Size:	286 m2



IN BRIEF

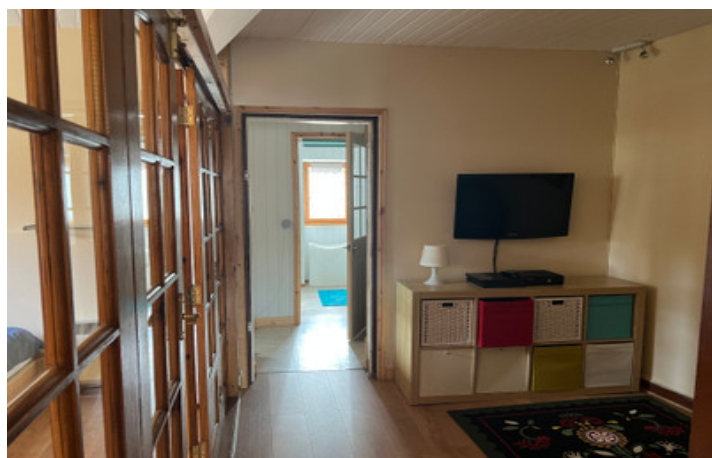
This great property is situated in the village of BUSSIÈRE-GALANT which has all the local amenities you need plus there is a super swimming lake less than 1kms down the road with lots of activities for all in the family including tree climbing, mini golf and play areas and a small snack bar.

ENERGY - DPE



NB. Quoted prices relate to euro transactions. Fluctuations in exchange rates are not the responsibility of the agency or those representing it. The agency and its representatives are not authorised to make or give guarantees relating to the property. These particulars do not form part of any contract but are to be taken as a general representation of the property. Any areas, measurements or distances are approximate. Text, photographs and plans, where applicable, are for guidance only. Leggett and its representatives have not tested services, equipment or facilities and cannot guarantee the same.

Particulars for off-plan purchases are intended as a guide only. Final finishes to the property may vary. Purchasers are advised to engage a solicitor to check the plans and specifications as laid out in their purchase contract with the developer.



DESCRIPTION

You enter the property into the kitchen which has a number of fitted kitchen units, sink etc... There is a log burning stove to one side and plenty of room for a table in the middle.

To the rear is the large lounge with patio doors opening out on to the terrace. You go up some steps to the garden which is laid to lawn on half of it and there is astro grass on the otherside.

Attached to the side of the house is a two storey barn.

Upstairs there is the main bedroom which then leads onto a 2nd lounge area and also another bedroom. To the rear of the house is the bathroom and another small room.

The property is connected to the mains drains, electric and water. There are a number of electric radiators and the log burning stove for heating with Double glazing throughout

All measurements provided are approximative. More photos and a Virtual tour available on request. This would make a great lock up and leave 2nd home or equally a perfect main residence.

NOTES

Information about risks to which this property is exposed is available on the Géorisques website : <https://www.georisques.gouv.fr>