

Character and style in extensive five bedroom modern home with garden.

EXCLUSIVE

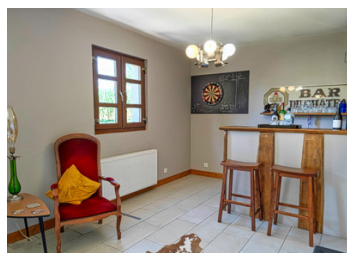


INFORMATION

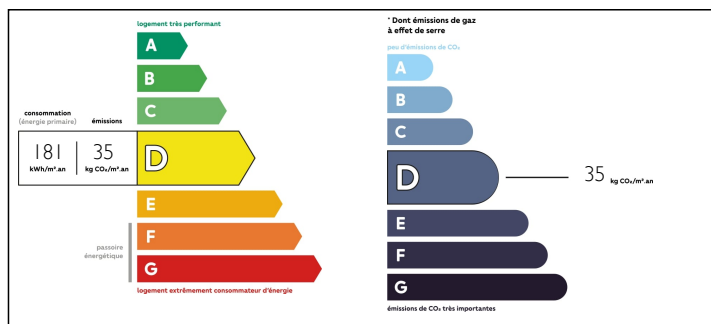
Town:	Saint-Amand-Magnazeix
Department:	Haute-Vienne
Bed:	5
Bath:	2
Floor:	200 m2
Plot Size:	2450 m2

IN BRIEF

It's the builders own house now available to you! Set off a lovely hamlet lane with country views this detached house looks as fresh as the day it was built. This immaculately finished home features traditional character from the exposed ceiling lattice beams in the upper rooms to the reclaimed oak details and feature fireplace on the ground floor. A large garden wraps around the house offering space to entertain under the established trees or get the ball out to play with the family. Insulation and German double glazing throughout. Central heating and mains drains. Handy to the A20 motorway you are 10 minutes to the trains in La Souterraine which will take you to Paris and beyond or around 30 minutes to Limoges airport 360 Tour: <https://antony-meehan-general.vr-360-tour.com/e/HpkBgtSHCZ4/e>

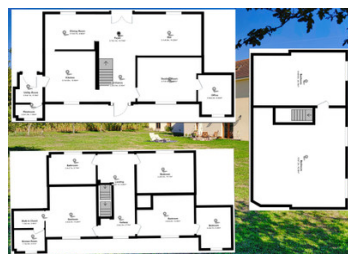
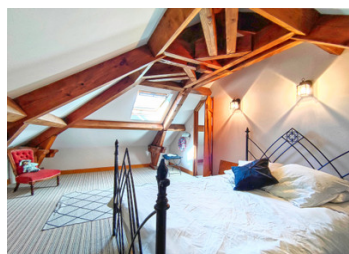


ENERGY - DPE



NB. Quoted prices relate to euro transactions. Fluctuations in exchange rates are not the responsibility of the agency or those representing it. The agency and its representatives are not authorised to make or give guarantees relating to the property. These particulars do not form part of any contract but are to be taken as a general representation of the property. Any areas, measurements or distances are approximate. Text, photographs and plans, where applicable, are for guidance only. Leggett and its representatives have not tested services, equipment or facilities and cannot guarantee the same.

Particulars for off-plan purchases are intended as a guide only. Final finishes to the property may vary. Purchasers are advised to engage a solicitor to check the plans and specifications as laid out in their purchase contract with the developer.



LOCAL TAXES

Taxe foncière: 875 EUR

NOTES

DESCRIPTION

You can tell when a builder puts his heart and soul into a build to create something special for his family.

Ground Floor

Enter into the foyer and you immediately sense someone has really done this right. The ground floor feels very open plan but has been cleverly designed into distinct living areas and great entertainer's kitchen.

Reclaimed wood from manger stalls feature in the dividing walls imparting history and warmth to the house. A custom fireplace features in the dining area which looks through to the kitchen so you can connect with guests while cooking up a storm.

To the right of the entrance the lounge area flows through to an office space in the right tower while the left tower host the utility room and guest WC.

The wide solid wood staircase acts as a light well adding to the double aspect illumination of the home.

First Floor

The first floor features the master bedroom with walk-in wardrobe and sleekly styled en suite bathroom with floor to ceiling tiled shower. If you are looking to relax this bathroom has the perfect tub for a long soak with a book.

There are another three large bedrooms on this floor with the option for some lucky person to have a private lounge to their room.

Second Floor

Upstairs is a huge area which can either be used as two bedrooms or use the larger as a games room.

The character of the house really comes alive up here with the unique roof frame...