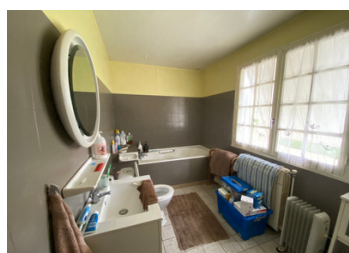
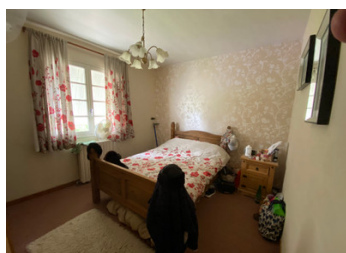
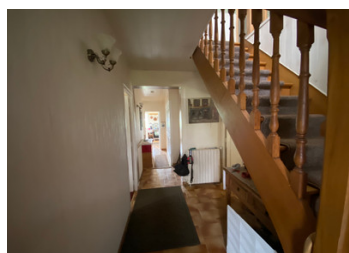


Four bedroomed Pavilion style house, with stunning views over the countryside, located on a plot 3,140ms.



INFORMATION

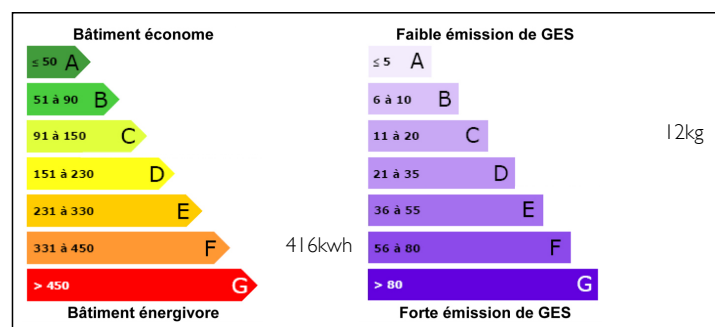
Town:	Saint-Aubin-du-Désert
Department:	Mayenne
Bed:	4
Bath:	2
Floor:	135 m2
Plot Size:	3140 m2



IN BRIEF

The property comprises of a basement level with garage. On the ground floor is the main entrance, hallway, living room, kitchen, two of the bedrooms and a bathroom. On the first floor is a large landing area with two large bedrooms and a shower room. The property has its main garden surrounding it on all sides and a further plot to the side with fruit trees and a large poly tunnel. As the house is elevated the views are stunning on all sides over the fields.

ENERGY - DPE



NB. Quoted prices relate to euro transactions. Fluctuations in exchange rates are not the responsibility of the agency or those representing it. The agency and its representatives are not authorised to make or give guarantees relating to the property. These particulars do not form part of any contract but are to be taken as a general representation of the property. Any areas, measurements or distances are approximate. Text, photographs and plans, where applicable, are for guidance only. Leggett and its representatives have not tested services, equipment or facilities and cannot guarantee the same.

Particulars for off-plan purchases are intended as a guide only. Final finishes to the property may vary. Purchasers are advised to engage a solicitor to check the plans and specifications as laid out in their purchase contract with the developer.



DESCRIPTION

null

Information about risks to which this property is exposed is available on the Géorisques website : <https://www.georisques.gouv.fr>

NOTES