

1326 m of constructible land in quiet residential area in charming village near Uzès.

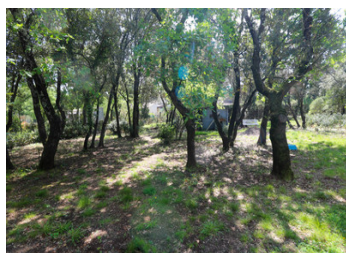
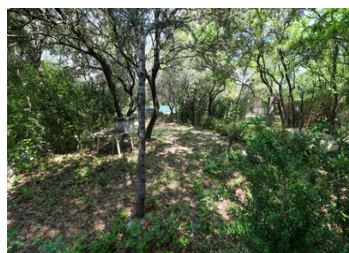
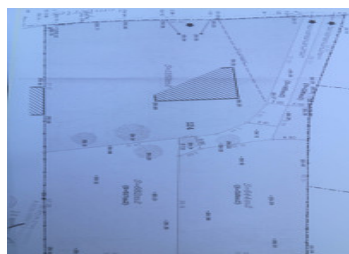


INFORMATION

Town:	Saint-Siffret
Department:	Gard
Bed:	0
Bath:	0
Floor:	0 m2
Plot Size:	1326 m2

IN BRIEF

Flat land, fully fenced, with trees, no noise pollution, south facing. Water, electricity and mains available on the edge.



ENERGY - DPE



NB. Quoted prices relate to euro transactions. Fluctuations in exchange rates are not the responsibility of the agency or those representing it. The agency and its representatives are not authorised to make or give guarantees relating to the property. These particulars do not form part of any contract but are to be taken as a general representation of the property. Any areas, measurements or distances are approximate. Text, photographs and plans, where applicable, are for guidance only. Leggett and its representatives have not tested services, equipment or facilities and cannot guarantee the same.

Particulars for off-plan purchases are intended as a guide only. Final finishes to the property may vary. Purchasers are advised to engage a solicitor to check the plans and specifications as laid out in their purchase contract with the developer.

DESCRIPTION

In nice village with restaurant, local shop and producers of wine and vegetables. Close to tennis courts and walking and cycling trails, 15 km from Pont du Gard, only 4 km from Uzès, conveniently situated for connections to airports & TGV stations at Nimes (30 km) or Avignon (40 km) is available plot of land.

Information about risks to which this property is exposed is available on the Géorisques website : <https://www.georisques.gouv.fr>

NOTES