

Detached bungalow on large section of land, at the edge of pretty village

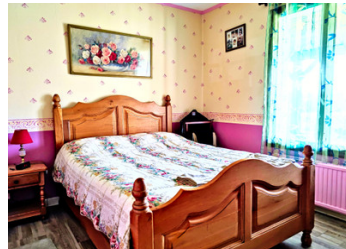


INFORMATION

Town:	Parnac
Department:	Indre
Bed:	3
Bath:	1
Floor:	77 m2
Plot Size:	1287 m2

IN BRIEF

Neat and tidy three bedroom detached house on a good sized piece of land. Gas central heating, double glazed and a good roof. Walk into the village or just 5 minutes by car to the lovely town of Saint-Benoît-du-Sault. Ideal for those looking for single level living or a lock up and leave bolt hole. See additional information on the Leggett website.



ENERGY - DPE



NB. Quoted prices relate to euro transactions. Fluctuations in exchange rates are not the responsibility of the agency or those representing it. The agency and its representatives are not authorised to make or give guarantees relating to the property. These particulars do not form part of any contract but are to be taken as a general representation of the property. Any areas, measurements or distances are approximate. Text, photographs and plans, where applicable, are for guidance only. Leggett and its representatives have not tested services, equipment or facilities and cannot guarantee the same.

Particulars for off-plan purchases are intended as a guide only. Final finishes to the property may vary. Purchasers are advised to engage a solicitor to check the plans and specifications as laid out in their purchase contract with the developer.



DESCRIPTION

Set on the edge of a quiet village and within walking distance to the local café/restaurant you will find this lovely three-bedroom bungalow which is priced to meet the market.

The lounge and dining area has double aspect light and views of the garden. The kitchen is separate and well equipped.

All three bedrooms enjoy good natural light and garden views. The house is completed by a bathroom and separate WC.

Fully double glazed and with gas central heating this will be a warm cosy haven during the winter. There is a septic tank of the same age as the house. Control of conformity to be done before sale.

There is plenty of off street parking available and a garage with workshop.

The large garden is flat so easy to maintain. It could do with some planting out along the fence lines to provide additional privacy.

Walk into the village or just five minutes by car to the lovely town of Saint-Benoît-du-Sault. Ideal for those looking for single level living or a lock up and leave bolt hole.

Similar properties to this are going fast in this price bracket. Be quick to secure your viewing.

Information about risks to which this property is exposed is available on the Géorisques website : <https://www.georisques.gouv.fr>

NOTES