

Up to date single bedroom hamlet house and barn. Electricity production with solar panels 950 year

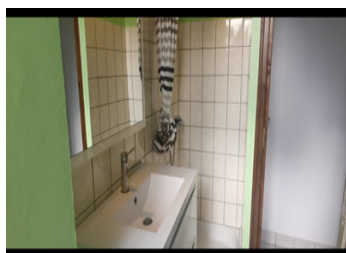
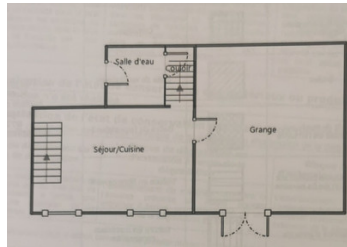


INFORMATION

Town:	Bussière-Galant
Department:	Haute-Vienne
Bed:	1
Bath:	1
Floor:	50 m2
Plot Size:	1370 m2

IN BRIEF

Electricity and septic system to standards, double glazing, perfect roof, pellet stove. Ideal extension to the barn or 2nd single bedroom apartment. 1300m2 plot with shared well. Solar panels Resale electricity: 950€/year Tax Foncier 371€/year. Perigord Limousin Natural Park, 30mn drive from Limoges Airport. Virtual visit on leggett website. See floor plan link.

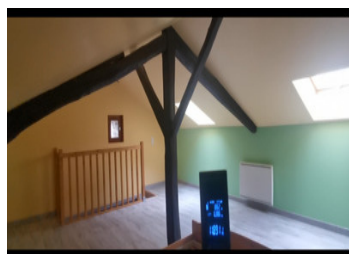


ENERGY - DPE



NB. Quoted prices relate to euro transactions. Fluctuations in exchange rates are not the responsibility of the agency or those representing it. The agency and its representatives are not authorised to make or give guarantees relating to the property. These particulars do not form part of any contract but are to be taken as a general representation of the property. Any areas, measurements or distances are approximate. Text, photographs and plans, where applicable, are for guidance only. Leggett and its representatives have not tested services, equipment or facilities and cannot guarantee the same.

Particulars for off-plan purchases are intended as a guide only. Final finishes to the property may vary. Purchasers are advised to engage a solicitor to check the plans and specifications as laid out in their purchase contract with the developer.



DESCRIPTION

Ideal extension to a barn or second 1 bedroom apartment. Double glazing, perfect roof, electricity and septic system to standards, pellet stove. Semi-detached barn on 1300m2 of land with shared well

Solar panels Resale electricity: 950€/year
Tax Foncier 371€/year.

Perigord Limousin Natural Park, 30mn drive from Limoges Airport

Information about risks to which this property is exposed is available on the Géorisques website : <https://www.georisques.gouv.fr>

LOCAL TAXES

Taxe foncière: 371 EUR

NOTES