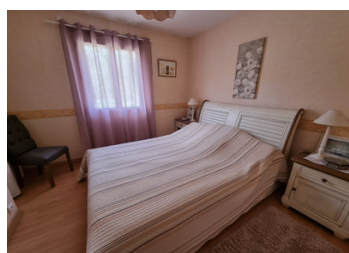


Contemporary house 10 mns from the commercial area of Trelissac/Boulazac. Near Périgueux.



INFORMATION

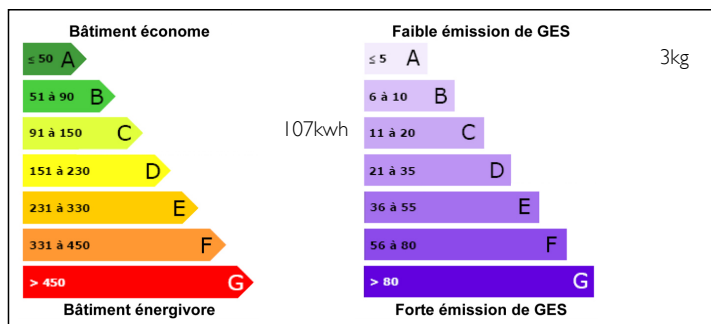
Town:	Sarliac-sur-l'Isle
Department:	Dordogne
Bed:	3
Bath:	1
Floor:	130 m2
Plot Size:	2500 m2



IN BRIEF

Close to Périgueux come and discover this contemporary villa of 130m² on a plot of 2500m². The house is composed of 3 bedrooms with cupboards, 1 bathroom, WC, a living room of more than 45 m², a kitchen with a storeroom giving onto a covered terrace. In the basement : a bedroom-office, a garage of 70 m², laundry room and cellar.

ENERGY - DPE



NB. Quoted prices relate to euro transactions. Fluctuations in exchange rates are not the responsibility of the agency or those representing it. The agency and its representatives are not authorised to make or give guarantees relating to the property. These particulars do not form part of any contract but are to be taken as a general representation of the property. Any areas, measurements or distances are approximate. Text, photographs and plans, where applicable, are for guidance only. Leggett and its representatives have not tested services, equipment or facilities and cannot guarantee the same.

Particulars for off-plan purchases are intended as a guide only. Final finishes to the property may vary. Purchasers are advised to engage a solicitor to check the plans and specifications as laid out in their purchase contract with the developer.



DESCRIPTION

Close to Périgueux come and discover this contemporary villa of 130m² on a plot of 2500m². The house is composed of 3 bedrooms with cupboards, 1 bathroom, WC, a living room of more than 45 m², a kitchen with a storeroom giving onto a covered terrace.

In the basement : a bedroom-office, a garage of 70 m², laundry room and cellar.

Information about risks to which this property is exposed is available on the Géorisques website : <https://www.georisques.gouv.fr>

LOCAL TAXES

Taxe foncière: 930 EUR

NOTES