

Three bedroom property with stunning views of Pyrenees Mountains, yet minutes from centre of market town Trie Sur Baise

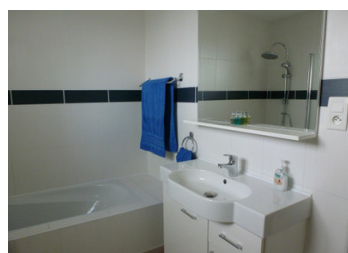


INFORMATION

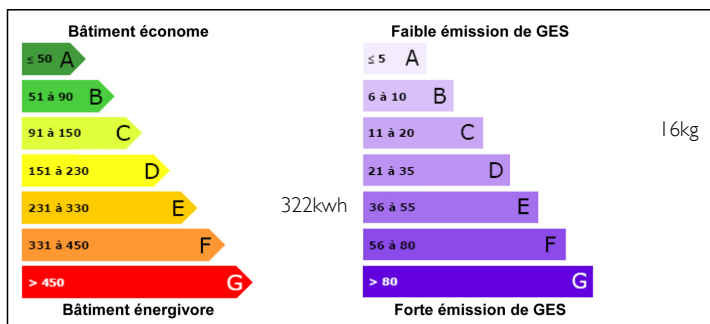
Town:	Trie-sur-Baïse
Department:	Hautes-Pyrénées
Bed:	3
Bath:	2
Floor:	120 m2
Plot Size:	1950 m2

IN BRIEF

Three bedroom spacious home on one level with pool and beautiful gardens would make an ideal home with potential for development to a gite business. outstanding views of the Pyrenees Mountains and relative seclusion yet five minutes from market town of Trie sur Baise. Airports: Biarritz 2hrs Toulouse 1hr 30 min Pau 40 mins and Lourdes/Tarbes 30 mins

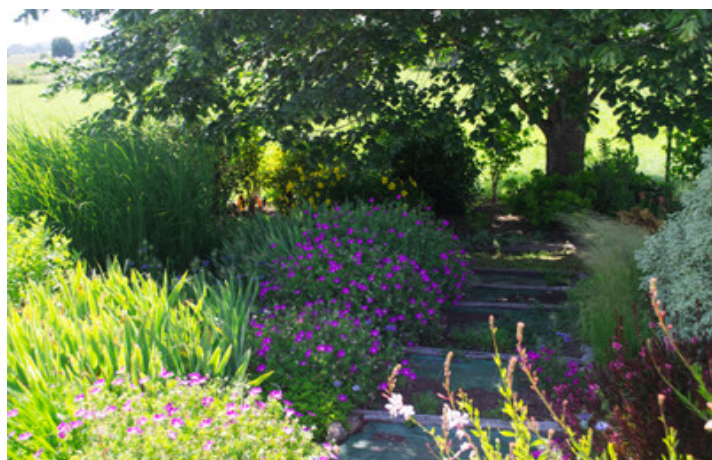


ENERGY - DPE



NB. Quoted prices relate to euro transactions. Fluctuations in exchange rates are not the responsibility of the agency or those representing it. The agency and its representatives are not authorised to make or give guarantees relating to the property. These particulars do not form part of any contract but are to be taken as a general representation of the property. Any areas, measurements or distances are approximate. Text, photographs and plans, where applicable, are for guidance only. Leggett and its representatives have not tested services, equipment or facilities and cannot guarantee the same.

Particulars for off-plan purchases are intended as a guide only. Final finishes to the property may vary. Purchasers are advised to engage a solicitor to check the plans and specifications as laid out in their purchase contract with the developer.



DESCRIPTION

This beautiful home is in pick up the keys and move in condition

It has undergone extensive but sympathetic renovation which has brought it to a high standard of comfort and practicality.

Suitable as a family home but equally could be easily extended into a chambres d'hôte or gîte business.

The landscaped garden is mainly laid to lawn with young and mature fruit trees flower and herb garden a well (ideal for watering the plants) and swimming pool 11 metres x 5 metres with a solar heated shower.

Local amenities shops and supermarkets are just minutes away.

The main house has a covered terrace stretching across the south facing front, ideal for sitting and enjoying the sun soaked afternoons.

On entering the home there is a small vestibule area with a doorway leading into the large double aspect lounge with dining area with views of the swimming pool and Pyrenees Mountains.

The lounge 43m² is the hub of the house with a wood burning stove on the centre wall supplying cost effective heating, all rooms lead from it.

At the rear of the property there is a spacious north facing double aspect kitchen 14m² with walk in pantry. The kitchen is fully fitted with views onto the surrounding countryside and side patio area.

Two spacious double bedrooms with cupboard space lead from the lounge, one with south facing window 11m², views of the Pyrenees Mountains and pool. The second bedroom 11m² has west facing windows into a side patio areas...

NOTES