

Beautiful 102m2 flat bathed in light 4 rooms-2 bedrooms and terrace in a quiet and secure residence

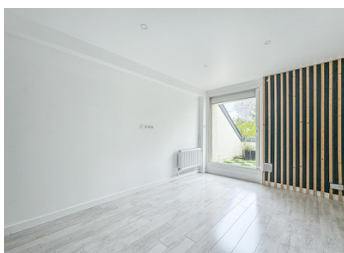


INFORMATION

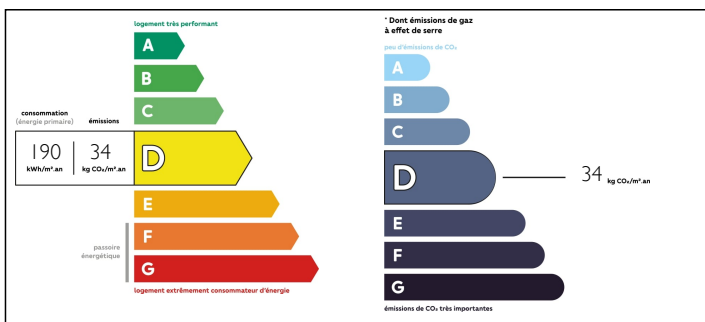
Town:	Saint-Nom-la-Bretèche
Department:	Yvelines
Bed:	2
Bath:	1
Floor:	102 m2
Plot Size:	0 m2

IN BRIEF

In Saint-Nom-la-Bretèche, in a sought-after, quiet, secure residence with a large children's play area and plenty of trees, and close to all amenities, LEGGETT International is pleased to present this superb, light-filled, fully renovated flat. The flat features a welcoming entrance hall, a spacious double living room, a fitted kitchen with dining area and scullery, two bedrooms, one of which opens onto a terrace, a shower room and a bathroom. There is potential for a third bedroom and plenty of storage space. A cellar completes the property and a large box is also available.



ENERGY - DPE



NB. Quoted prices relate to euro transactions. Fluctuations in exchange rates are not the responsibility of the agency or those representing it. The agency and its representatives are not authorised to make or give guarantees relating to the property. These particulars do not form part of any contract but are to be taken as a general representation of the property. Any areas, measurements or distances are approximate. Text, photographs and plans, where applicable, are for guidance only. Leggett and its representatives have not tested services, equipment or facilities and cannot guarantee the same.

Particulars for off-plan purchases are intended as a guide only. Final finishes to the property may vary. Purchasers are advised to engage a solicitor to check the plans and specifications as laid out in their purchase contract with the developer.



DESCRIPTION

Saint-Nom-la-Bretèche is a charming commune in the Yvelines department of the Île-de-France region, around 30 kilometres west of Paris. Nestling in a lush, wooded setting, the town offers a peaceful, unspoilt lifestyle, while being easily accessible from the capital thanks to its excellent transport links.

Renowned for its quality of life and residential character, Saint-Nom-la-Bretèche has a friendly atmosphere and unspoilt environment. It boasts an exceptional natural heritage, including the Marly-le-Roi national forest, which offers magnificent areas for walking and relaxation.

The town also offers all the amenities you need for everyday life, with local shops, renowned schools, sports and cultural facilities, as well as landscaped green spaces. What's more, the town's dynamic community life offers a multitude of activities and events throughout the year, encouraging exchanges and conviviality between residents.

Saint-Nom-la-Bretèche thus embodies the perfect compromise between the tranquillity of a rural setting and the proximity of urban infrastructures, offering its residents a privileged living environment just a stone's throw from the capital.

Information about risks to which this property is exposed is available on the Géorisques website : <https://www.georisques.gouv.fr>

NOTES