

## 19th Century Manor house set in a park of around 5 acres with large outbuildings

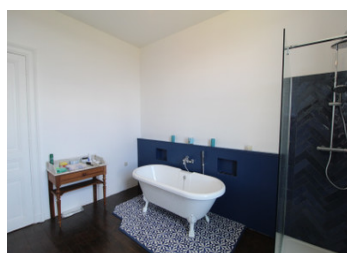


## INFORMATION

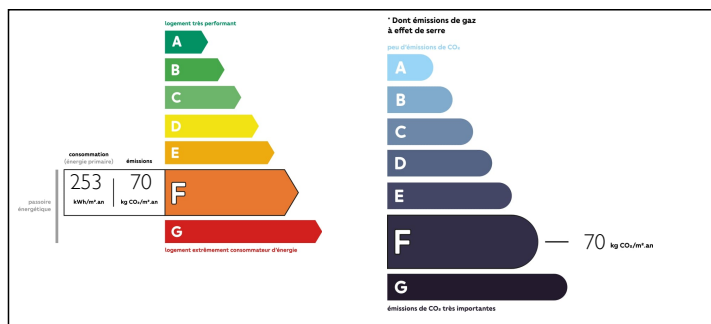
Town:	Coussay-les-Bois
Department:	Vienne
Bed:	5
Bath:	4
Floor:	312 m2
Plot Size:	19743 m2

## IN BRIEF

This impressive 19th century mansion sits high up on a hill, is accessed via a long tree lined driveway and sits in around 5 acres of parkland. The original manor currently has 2 entrance halls, one at the front and one at the rear, a large sitting room with a feature open fireplace, an office and also a sitting room and kitchen to finish renovating/decorating. Then on the first floor there is a large landing, 3 bedrooms, an office space and a large family bathroom. There is also space to create a dressing room and another room for a shower room should you require it. There is also a large attic space and a vaulted cellar. In the extension, there is a large open plan kitchen and dining room and also a laundry room with shower. To the first floor there are 2 bedrooms both with ensuite shower facilities. To...



## ENERGY - DPE



NB. Quoted prices relate to euro transactions. Fluctuations in exchange rates are not the responsibility of the agency or those representing it. The agency and its representatives are not authorised to make or give guarantees relating to the property. These particulars do not form part of any contract but are to be taken as a general representation of the property. Any areas, measurements or distances are approximate. Text, photographs and plans, where applicable, are for guidance only. Leggett and its representatives have not tested services, equipment or facilities and cannot guarantee the same.

Particulars for off-plan purchases are intended as a guide only. Final finishes to the property may vary. Purchasers are advised to engage a solicitor to check the plans and specifications as laid out in their purchase contract with the developer.



## LOCAL TAXES

Taxe foncière: 582 EUR

## NOTES

## DESCRIPTION

The main 19th century manor house:

Ground floor:

Entrance hall 1: 9m<sup>2</sup>

Entrance hall 2: 16m<sup>2</sup>

Living room: 25m<sup>2</sup>

Reception room: 25m<sup>2</sup>

Office: 15m<sup>2</sup>

Kitchen (to renovate): 16m<sup>2</sup>

WC

Cellar

First floor:

Landing: 7m<sup>2</sup>

Office: 12m<sup>2</sup>

Corridor

Bedroom 1: 20m<sup>2</sup>

Bedroom 2: 16m<sup>2</sup>

Bedroom 3: 20m<sup>2</sup>

Dressing: 6m<sup>2</sup>

Family bathroom: 14m<sup>2</sup>

Shower room to renovate

Second floor:

Large unconverted attic with 3 rooms

Extension:

Ground floor:

Dining room: 31m<sup>2</sup>

Kitchen: 23m<sup>2</sup>

Shower/laundry room: 3m<sup>2</sup>

Cellar 2

First floor:

Bedroom 1 with ensuite shower room: 16m<sup>2</sup>

Bedroom 2 with ensuite shower room: 21m<sup>2</sup>

Set in parkland of nearly 5 acres with a stable block of approx. 300m<sup>2</sup> and a large barn with hangar attached of approx. 1200m<sup>2</sup>

The property is situated around 15km from access