

Ideally Situated Restaurant in the Medieval Centre of St Yrieix La Perche

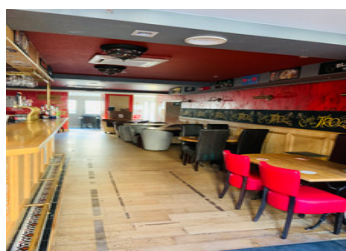
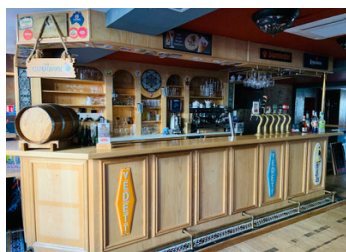


INFORMATION

Town:	Saint-Yrieix-la-Perche
Department:	Haute-Vienne
Bed:	0
Bath:	0
Floor:	0 m2
Plot Size:	0 m2

IN BRIEF

This is a fantastic opportunity to buy Restaurant Premises which are ready to be rented or owner run with the addition of space above the restaurant to develop into flats. The property is situated in the Historic Centre of Saint Yrieix La Perche where there is significant foot fall.

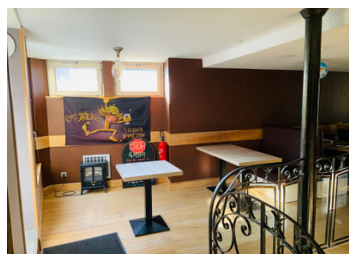


ENERGY - DPE



NB. Quoted prices relate to euro transactions. Fluctuations in exchange rates are not the responsibility of the agency or those representing it. The agency and its representatives are not authorised to make or give guarantees relating to the property. These particulars do not form part of any contract but are to be taken as a general representation of the property. Any areas, measurements or distances are approximate. Text, photographs and plans, where applicable, are for guidance only. Leggett and its representatives have not tested services, equipment or facilities and cannot guarantee the same.

Particulars for off-plan purchases are intended as a guide only. Final finishes to the property may vary. Purchasers are advised to engage a solicitor to check the plans and specifications as laid out in their purchase contract with the developer.



DESCRIPTION

Lovely character filled old building with the ground floor already having been run as a popular bar restaurant. The bar- restaurant has ample space with professional kitchen, wine cellar and lower floor storage.

Generous sized bar with eating area currently set up for around 44 covers.

Great location offering good foot fall with the added bonus of a partially completed property development in the upper floors.

This property offers a great business and investment opportunity.

Early viewing recommended.

Information about risks to which this property is exposed is available on the Géorisques website : <https://www.georisques.gouv.fr>

NOTES