

Very well-preserved 1937 Art-Deco house near Rambouillet, set in 3.3ha of grounds with century-old trees.



INFORMATION

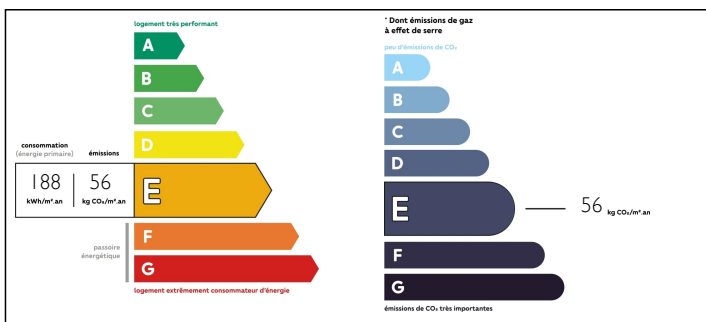
Town:	Rambouillet
Department:	Yvelines
Bed:	6
Bath:	3
Floor:	465 m2
Plot Size:	33000 m2

IN BRIEF

Leggett Immobilier is pleased to offer Art Deco enthusiasts and connoisseurs this sumptuous 1937 property, designed by architect, decorator and furniture-maker Pierre PETIT. This commissioned work was entirely decorated by a number of contemporary artists of the period, including Henri DIEUPART (Fresco artist), Georges-Lucien GUYOT and Jean René DEBARRE (sculptures), Jean PERZEL (light fittings), Raymond SUBES (ironworker), Louis Gigou (locksmith), GENET-MICHON (light fitters) and Jean Joseph Kef Ray (glassmaker).

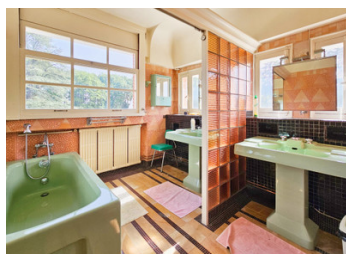
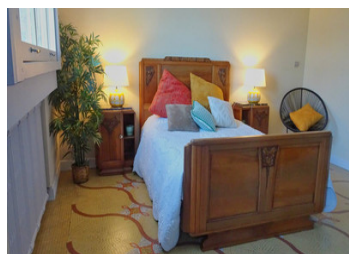
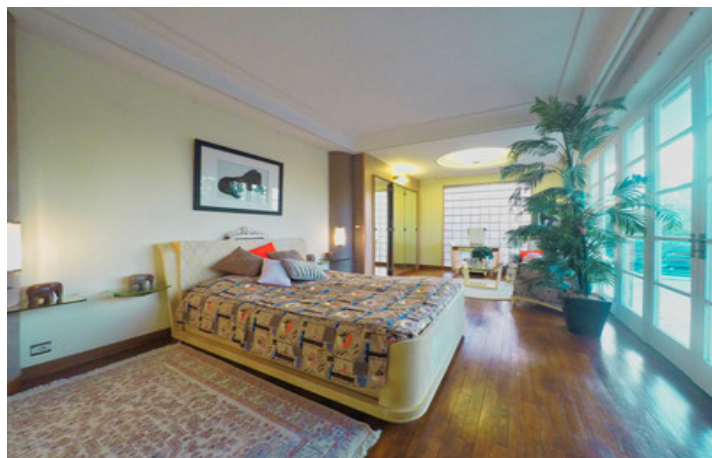


ENERGY - DPE



NB. Quoted prices relate to euro transactions. Fluctuations in exchange rates are not the responsibility of the agency or those representing it. The agency and its representatives are not authorised to make or give guarantees relating to the property. These particulars do not form part of any contract but are to be taken as a general representation of the property. Any areas, measurements or distances are approximate. Text, photographs and plans, where applicable, are for guidance only. Leggett and its representatives have not tested services, equipment or facilities and cannot guarantee the same.

Particulars for off-plan purchases are intended as a guide only. Final finishes to the property may vary. Purchasers are advised to engage a solicitor to check the plans and specifications as laid out in their purchase contract with the developer.



LOCAL TAXES

Taxe foncière: 6000 EUR

Taxe habitation: 2000 EUR

NOTES

DESCRIPTION

Built on commission by Pierre Petit, part of whose original work was exhibited at the 1937 Paris Universal Exhibition on the theme of "Hunting and Fishing Rendezvous", this house encompasses four floors and a basement and offers almost 460 m² of living space.

° The monumental double main door reveals a sumptuous entrance, entirely frescoed over a 6m height. From this entrance, we enter the lounge/bar on the right, which still has all its original decoration (bar covered in coloured glass tubes, coloured stucco wall units by Jean René Debarre, multi-effect backlighting, etc.), and several rooms that were once used for service purposes which still have their original furnishings.

° On the left is the splendid spiral staircase leading to the large living room (53m²) on the 1st floor, also with its original Art Deco furniture, abundantly lit by the bay windows giving access to the vast half-moon terrace overlooking the park, the pond and its fountain, the rose garden and the gardens.

Also on this level are :

- a delightful small lounge with its private terrace, separated from the living room by two stained glass double doors designed by Jean Joseph Kef Ray.
- the kitchen and pantry.

° A suspended staircase, real masterpiece, leads to the second level where takes place :

- the billiard room.

...